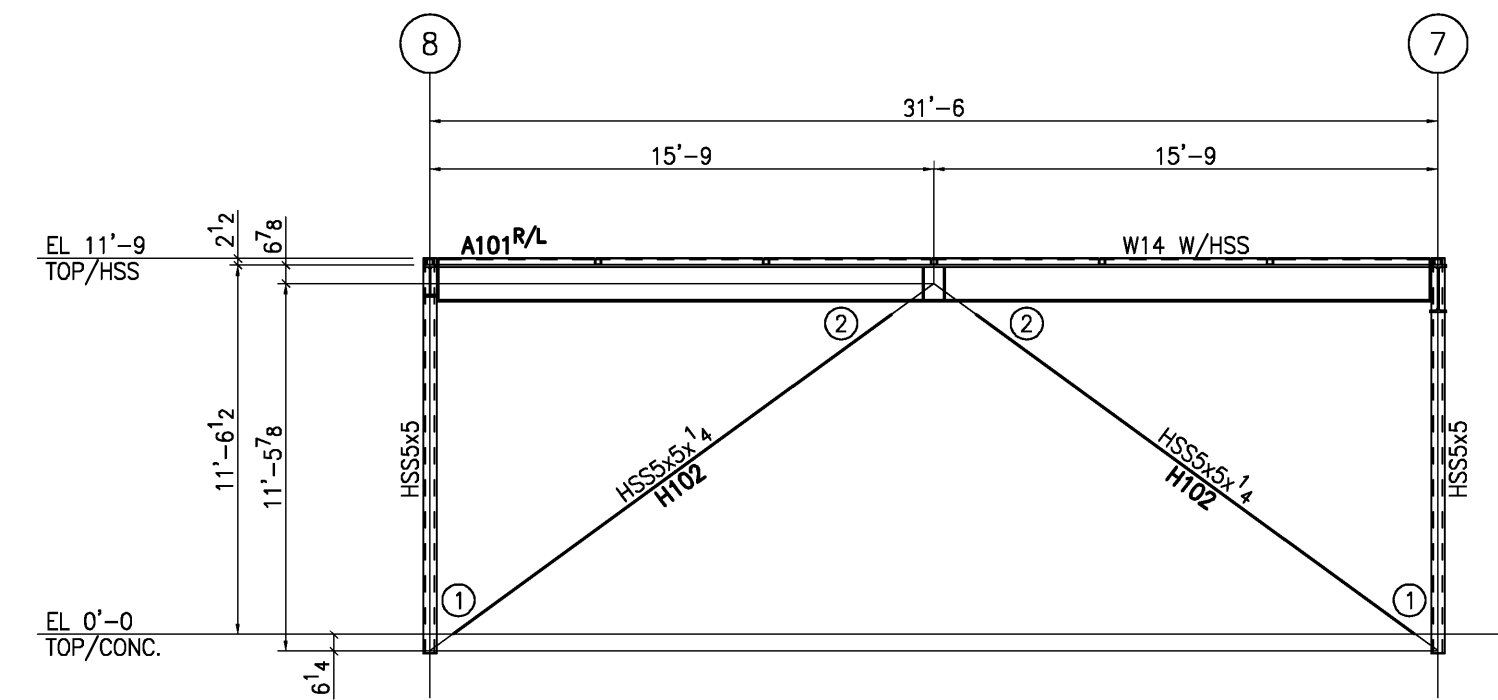
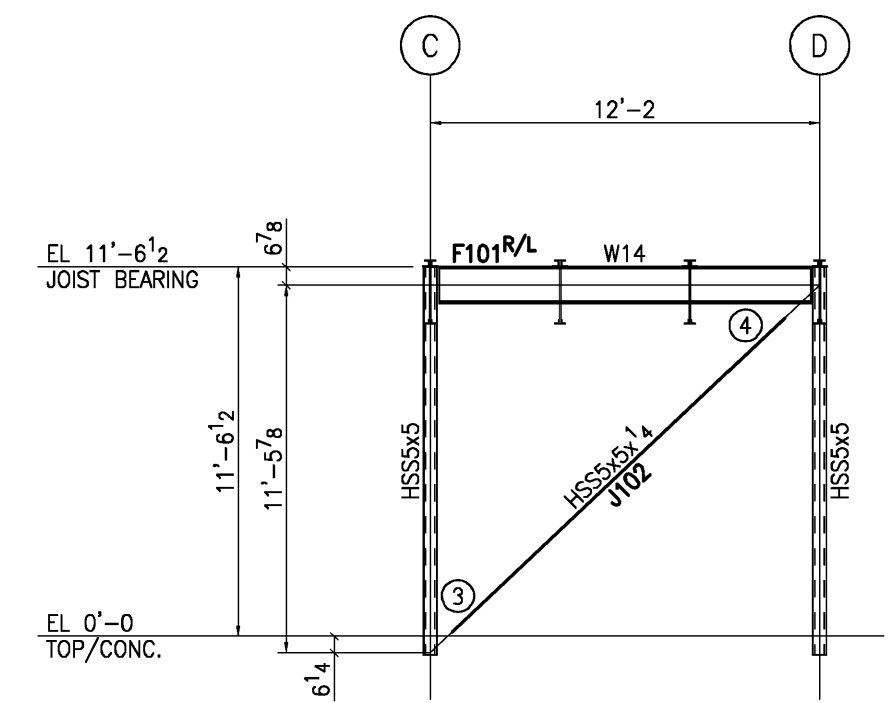


ROOF FRAMING PLAN - AREA A

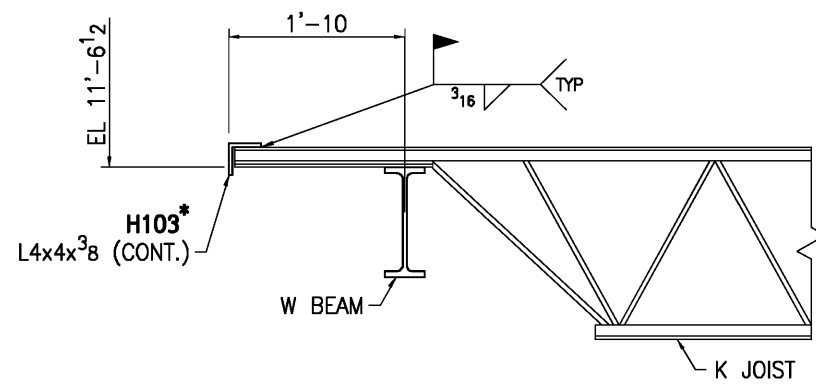
TOP/STEEL EL = 11'-9" TYP (UNO)
 JOIST BEARING EL = 11'-6 1/2" TYP (UNO)



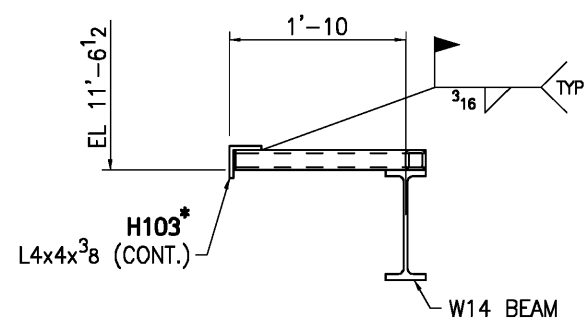
ELEVATION @ LINES 'A' & 'F'
 (LOOKING NORTH)



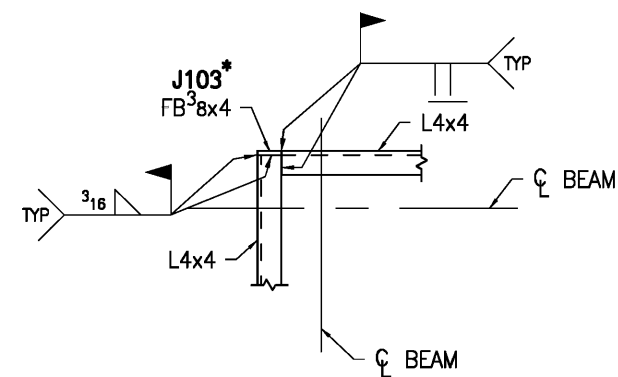
ELEVATION @ LINES '7' & '10'
 (LOOKING EAST)



SECTION 1
 A1/S60.2



SECTION 2
 A2/S60.2



TYPICAL PERIMETER ANGLE DETAIL @ CORNERS

DETAIL A



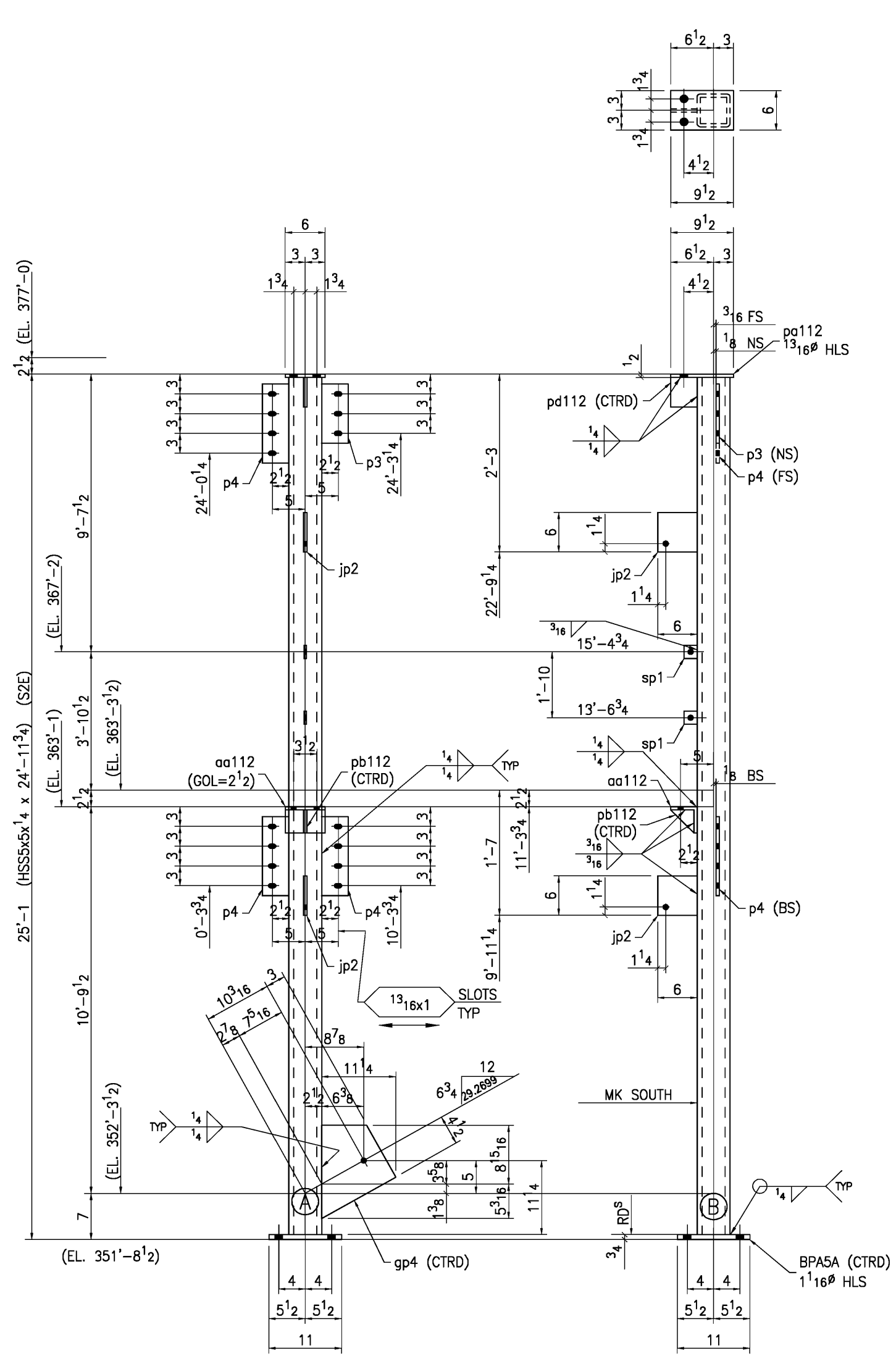
ERECTOR NOTE: * DENOTES MATERIAL SUPPLIED IN STOCK LENGTHS, FIELD CUT & SPLICE AS REQUIRED.

ERECTOR NOTE:
 BACK CHARGES FOR REPAIRS OR ALTERATION TO OUR WORK WILL NOT BE ACCEPTED UNLESS APPROVED BY PRECISION WELDING & FABRICATION (207) 854-9330

PRINT RECORD		
DATE	NO	USE
8.12.10	1	ENG
8.19.10	6	OFA
9.13.10	1	FILE

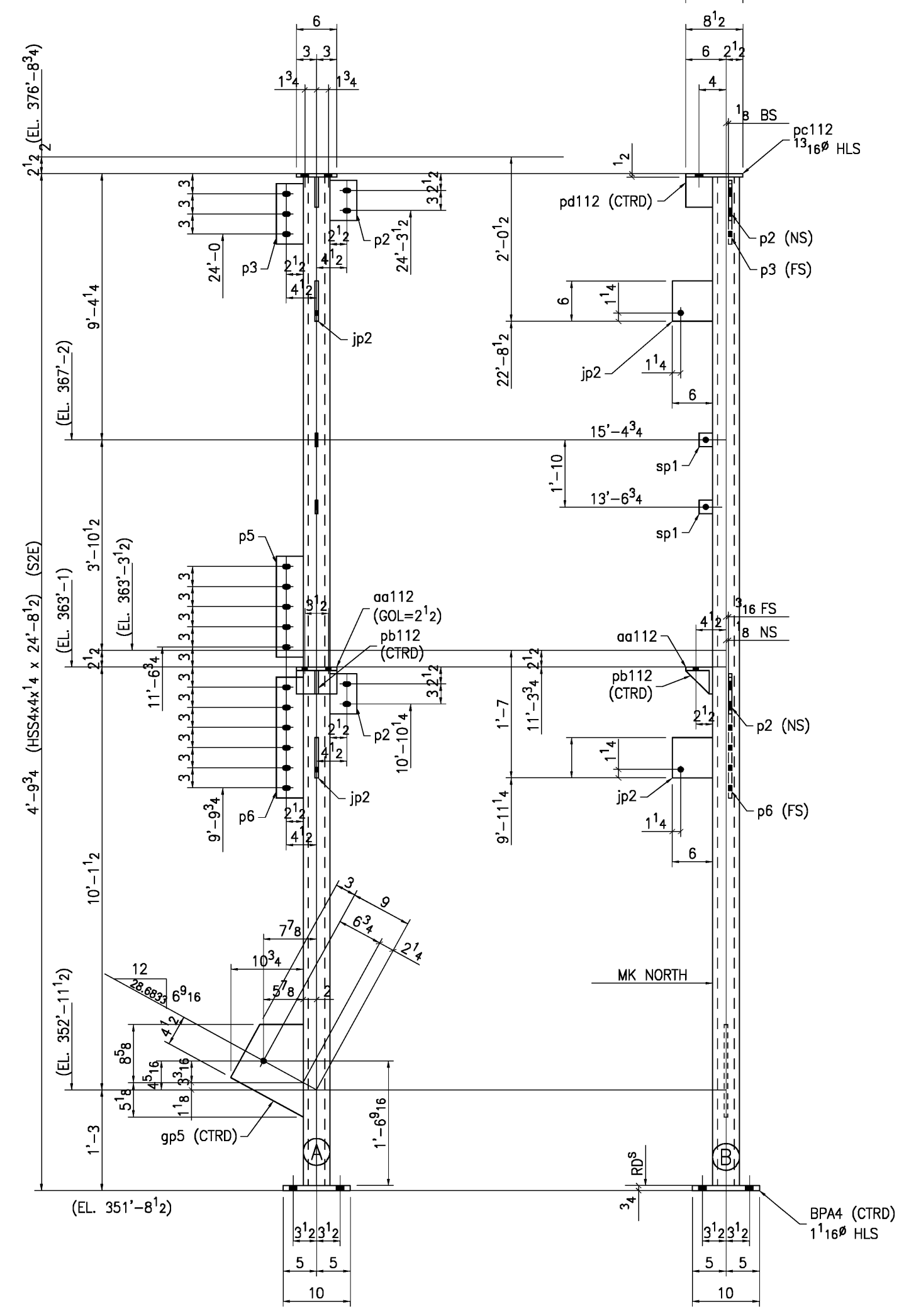
REVISIONS		
DATE	NO	BY

DRAWN	DATE	CHECKED	DATE	JOB NO.	DWG. NO.
JST	7.27.10	PFS	9.13.10	2307	E100



ONE - COLUMN - A112

(AE-A1)



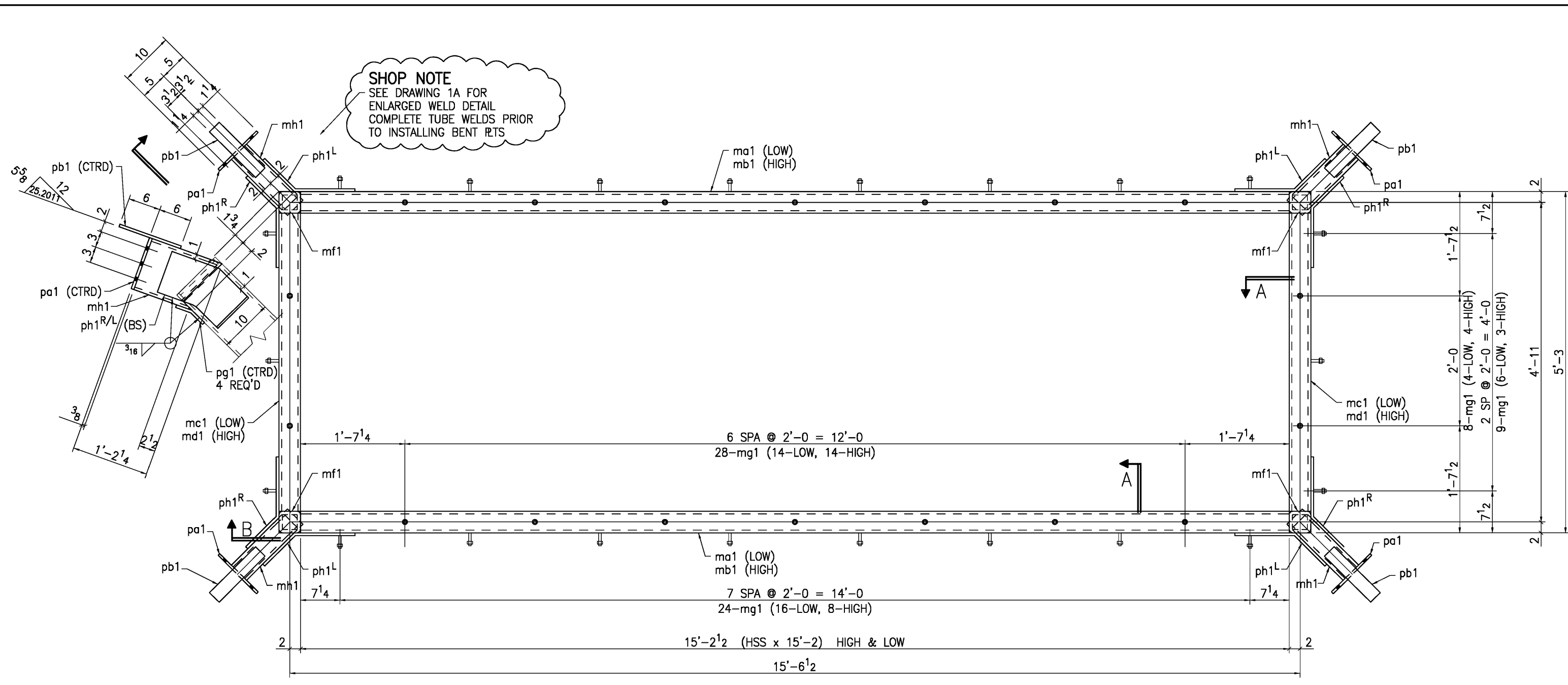
ONE - COLUMN - B112

(AB.3-A6)

BILL OF MATERIAL							
LINE	MARK	QUAN	MARK	SHAPE	FEET/INCHES	WEIGHT	REMARKS
1							
2							
3	A112	ONE		HSS5x5x1/4	24 11 3/4	390.17	(S2E) A500B
4		ONE	BPA5A	R ³ 4x11	0 11	25.71	
5		ONE	pa112	R ¹ 2x6	0 9 1/2	8.07	
6		2	p4	FB ³ 8x4	1 0	10.20	
7		ONE	aa112	L4x4x3/8	0 6	4.90	
8		ONE	pb112	R ³ 8x3 5/8	0 3 5/8	1.40	
9		2	jp2	R ¹ 2x6	0 6	10.20	
10		ONE	p3	FB ³ 8x4	0 9	3.82	
11		2	sp1	R ¹ 4x2	0 2	0.57	
12		ONE	gp4	R ¹ 2x11 1/4	1 2 1/8	22.51	
13		ONE	pd112	R ¹ 2x4	0 4 1/2	2.55	
14							
15							
16							
17							
18	B112	ONE		HSS4x4x1/4	24 8 1/2	301.69	(S2E) A500B
19		ONE	BPA4	R ³ 4x10	0 10	21.25	
20		ONE	pc112	R ¹ 2x6	0 8 1/2	7.22	
21		2	p2	FB ³ 8x4	0 6	5.10	
22		ONE	p6	FB ³ 8x4	1 6	7.65	
23		ONE	p5	FB ³ 8x4	1 3	6.37	
24		ONE	aa112	L4x4x3/8	0 6	4.90	
25		ONE	pb112	R ³ 8x3 5/8	0 3 5/8	1.40	
26		2	jp2	R ¹ 2x6	0 6	10.20	
27		ONE	p3	FB ³ 8x4	0 9	3.82	
28		2	sp1	R ¹ 4x2	0 2	0.57	
29		ONE	gp5	R ¹ 2x10 3/4	1 1 3/4	20.94	
30		ONE	pd112	R ¹ 2x4	0 4 1/2	2.55	
31							
32							
33							
34							
35							
36							
37							
38							
39							
40							
41							
42							
43							
44							
45							
46							
47							
48							
49							

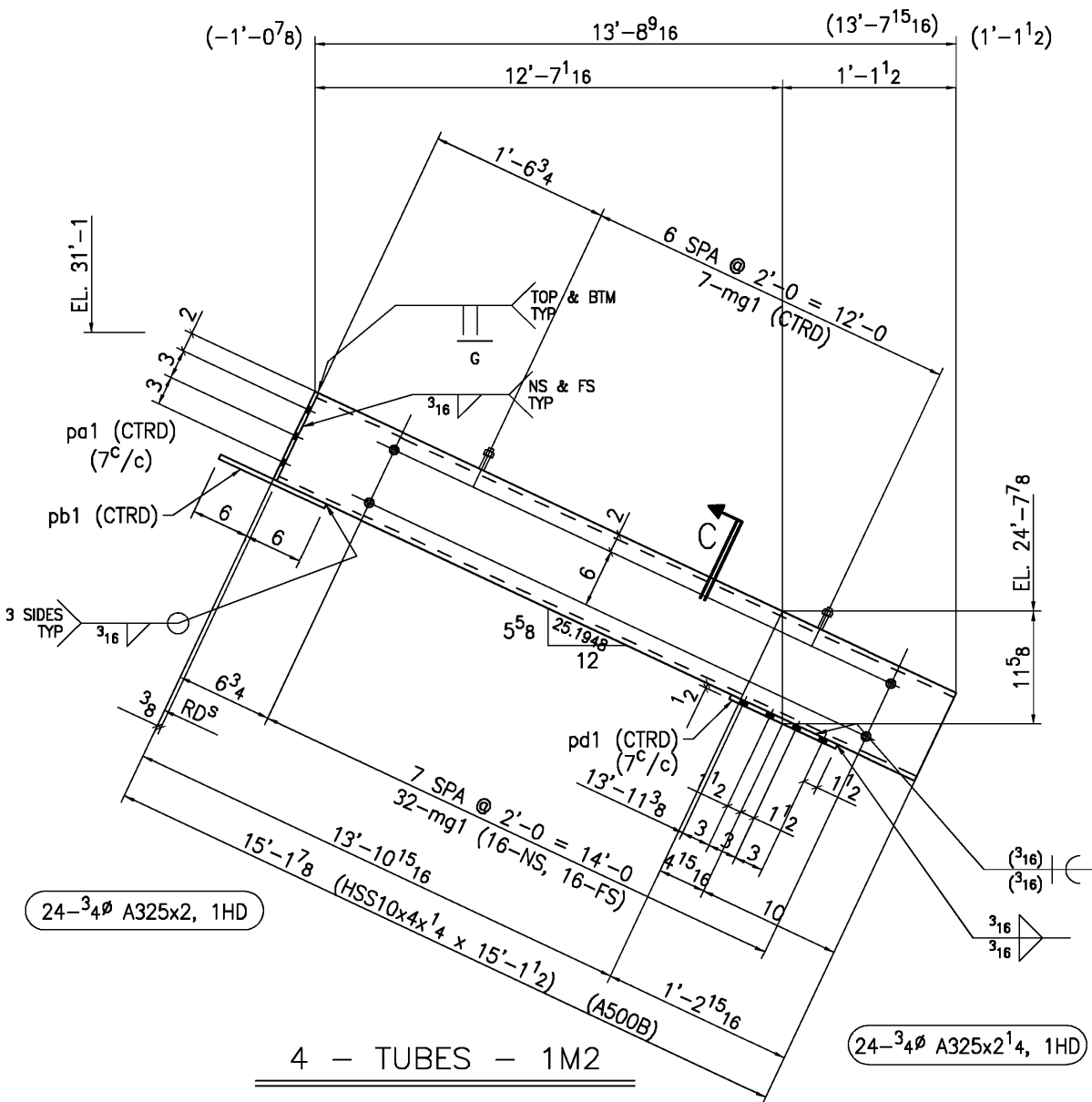
REVISIONS			PRINT RECORD		
NO.	DATE	DESCRIPTION	DATE	QTY.	ISSUE

PAINT	NO PAINT (UNO)	HOLES	13/16" (UNO)	WELDS	E70LH	APPL	5.20.11	SHIP
							DATE	5.3.11
							DRAWN	JST
							CHECKED	
							JOB NO.	J-316
							DRG. NO.	112

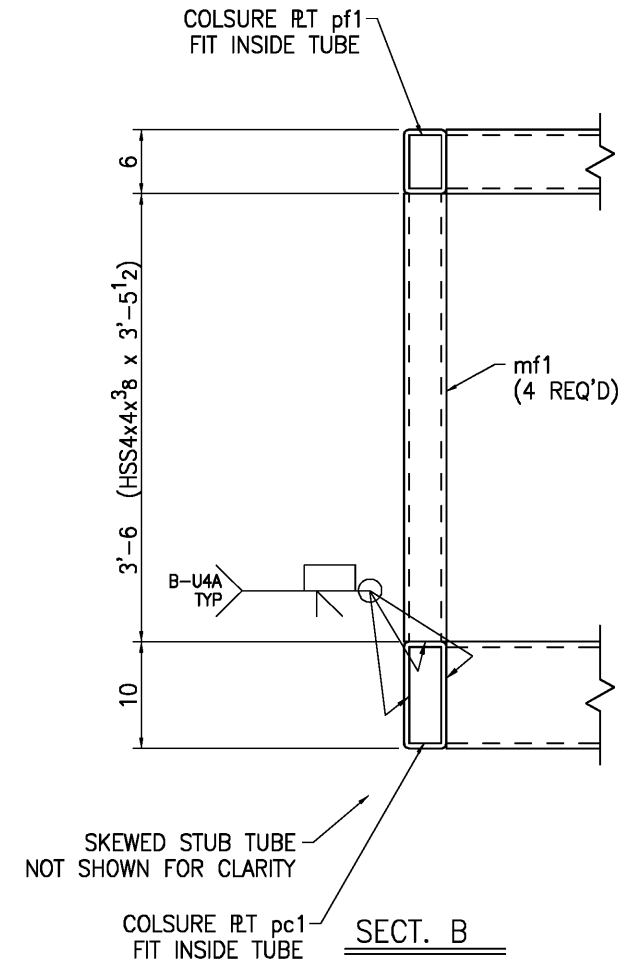
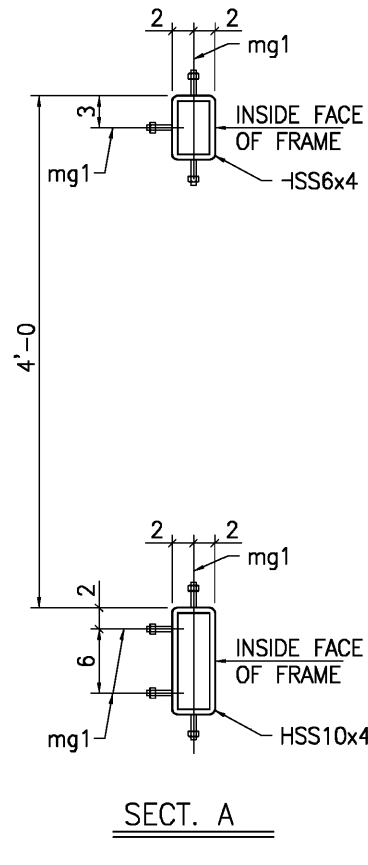
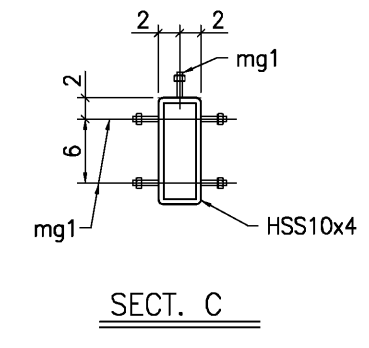


SHOP NOTE
SEE DRAWING 1A FOR ENLARGED WELD DETAIL COMPLETE TUBE WELDS PRIOR TO INSTALLING BENT RTS

ONE - ASSEMBLY - 1M1



4 - TUBES - 1M2

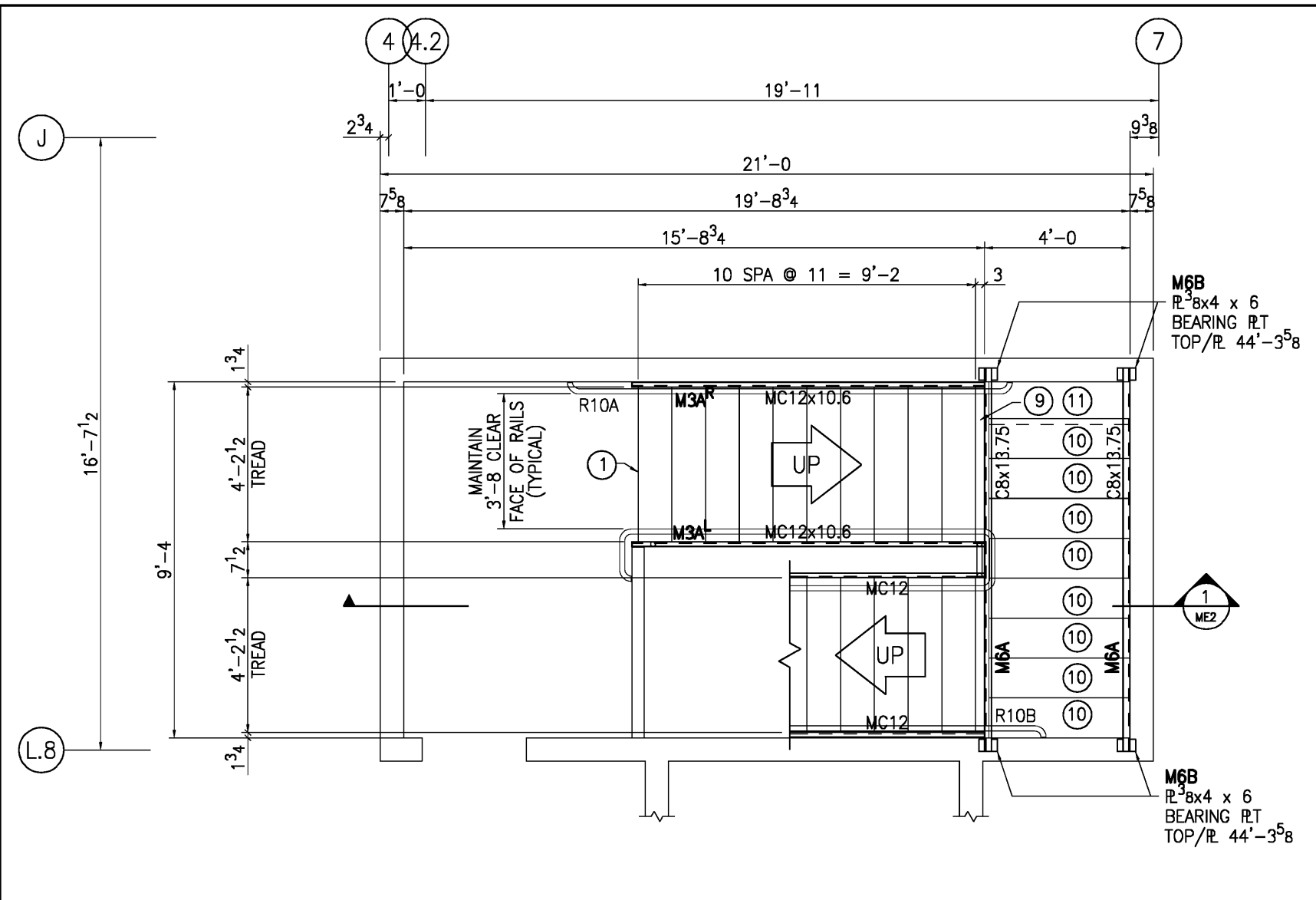


BILL OF MATERIAL						
LINE	MARK	NO	SIZE	LENGTH		REMARKS
				FT	IN	
1						
2						
3		ONE	ASSEMBLY			
4	ma1	2	HSS10x4x1/4	15	2	A500B
5	mb1	2	HSS6x4x1/4	15	2	A500B
6	mc1	2	HSS10x4x1/4	5	3	A500B
7	md1	2	HSS6x4x1/4	5	3	A500B
8	mf1	4	HSS4x4x3/8	3	5 1/2	A500B
9	mg1	138	1/2 THD ROD	0	2 1/2	W/NUT & WASH
10	mh1	4	HSS10x4x1/4	1	5 1/8	A500B
11	pa1	4	R3x10	0	10	
12	pb1	4	R3x2 1/2	1	0	
13	pc1	4	R3x3 1/2	0	9 1/2	
14	pd1	4	R3x3 1/2	0	5 1/2	
15	pg1	4	R3x3	0	6 3/8	BENT
16	phR/L	8	R3x11 1/16	1	8 1/8	BENT 4R-4L
17						
18						
19						
20						
21	1M2	4	HSS10x4x1/4	15	1 1/2	A500B
22	pa1	4	R3x10	0	10	
23	pb1	4	R3x2 1/2	1	0	
24	pd1	4	R3x3 1/2	1	0	
25	mg1	156	1/2 THD ROD	0	2 1/2	W/NUT & WASH
26						
27						
28						
29						
30						
31						
32						
33						
34						
35						
36						
37						
38						
39						
40						
41						
42						
43						
44						
45						
46						
47						
48						
49						
50						
51						
52						
53						
54						

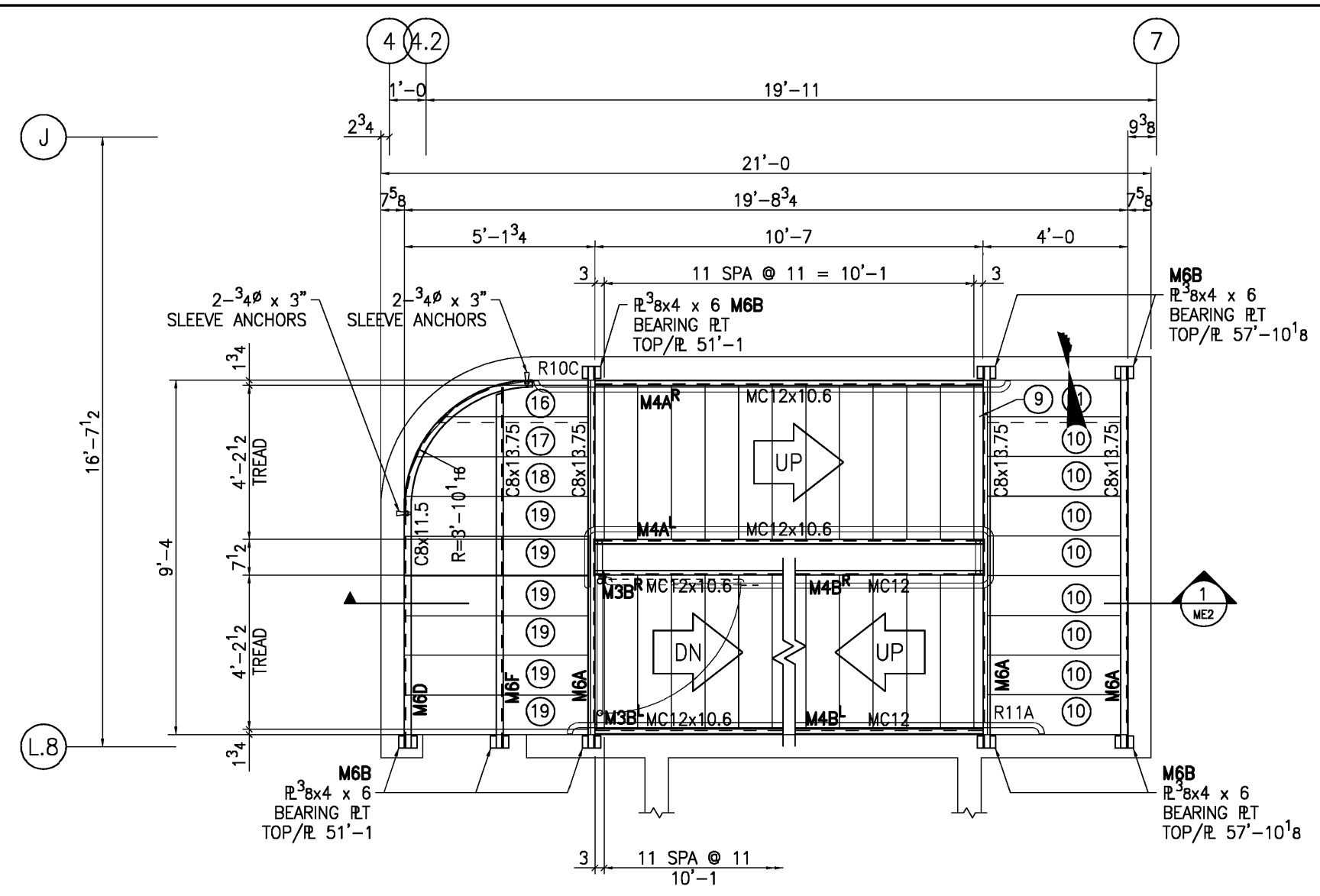
FIELD BOLTS

PAINT 1-S.C. RED OXIDE			
MATERIAL A36 TYP (UNO)			
HOLES 13/16 TYP (UNO)			
ELECTRODES E7018	NO	DATE	DESCRIPTION
DIAG. REF # E2			REVISIONS

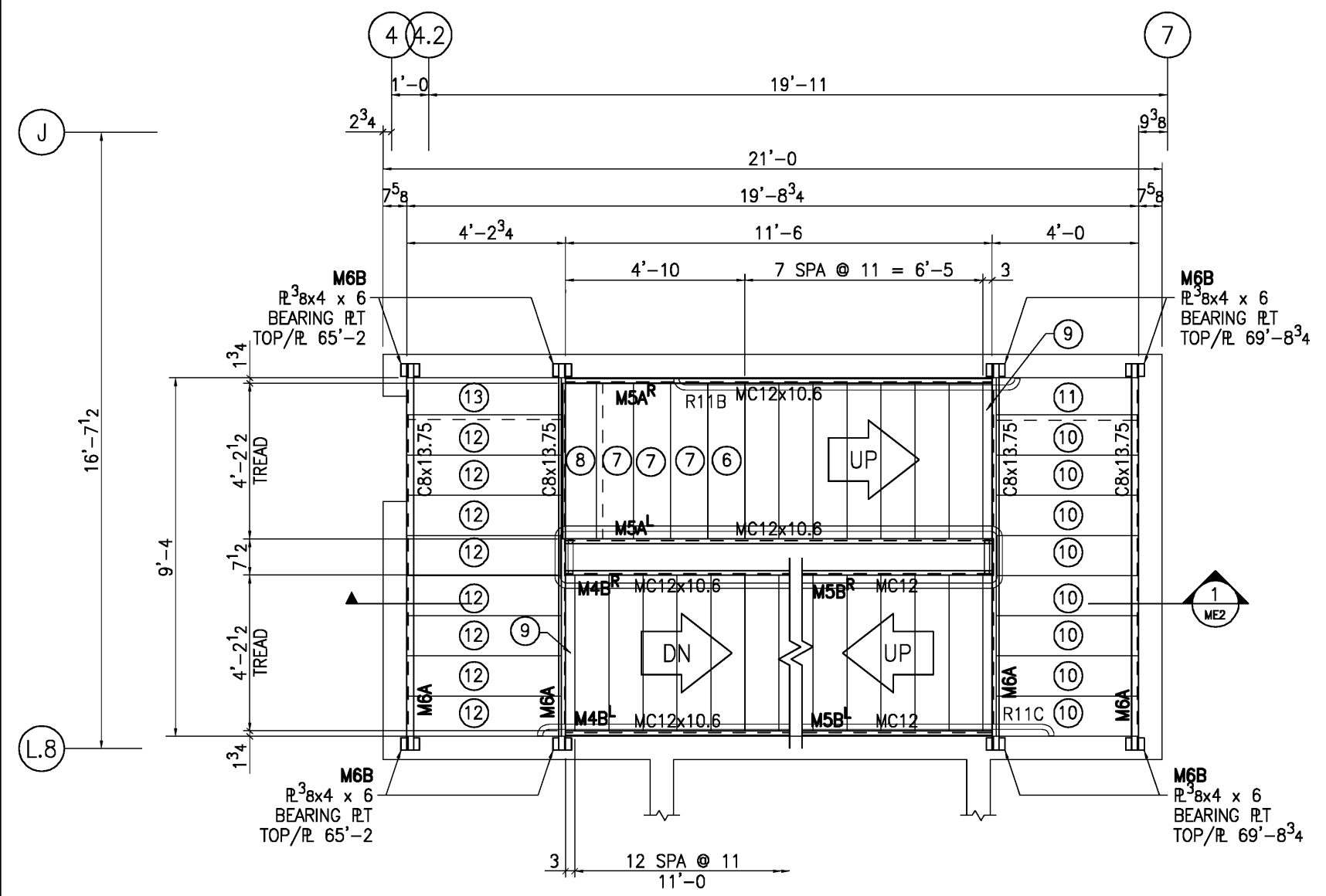
DRAWN JST	CHECKED JST	CONTRACT NO.	DWG NO.
DATE 11.21.10	DATE 1.5.11	M109	ONE



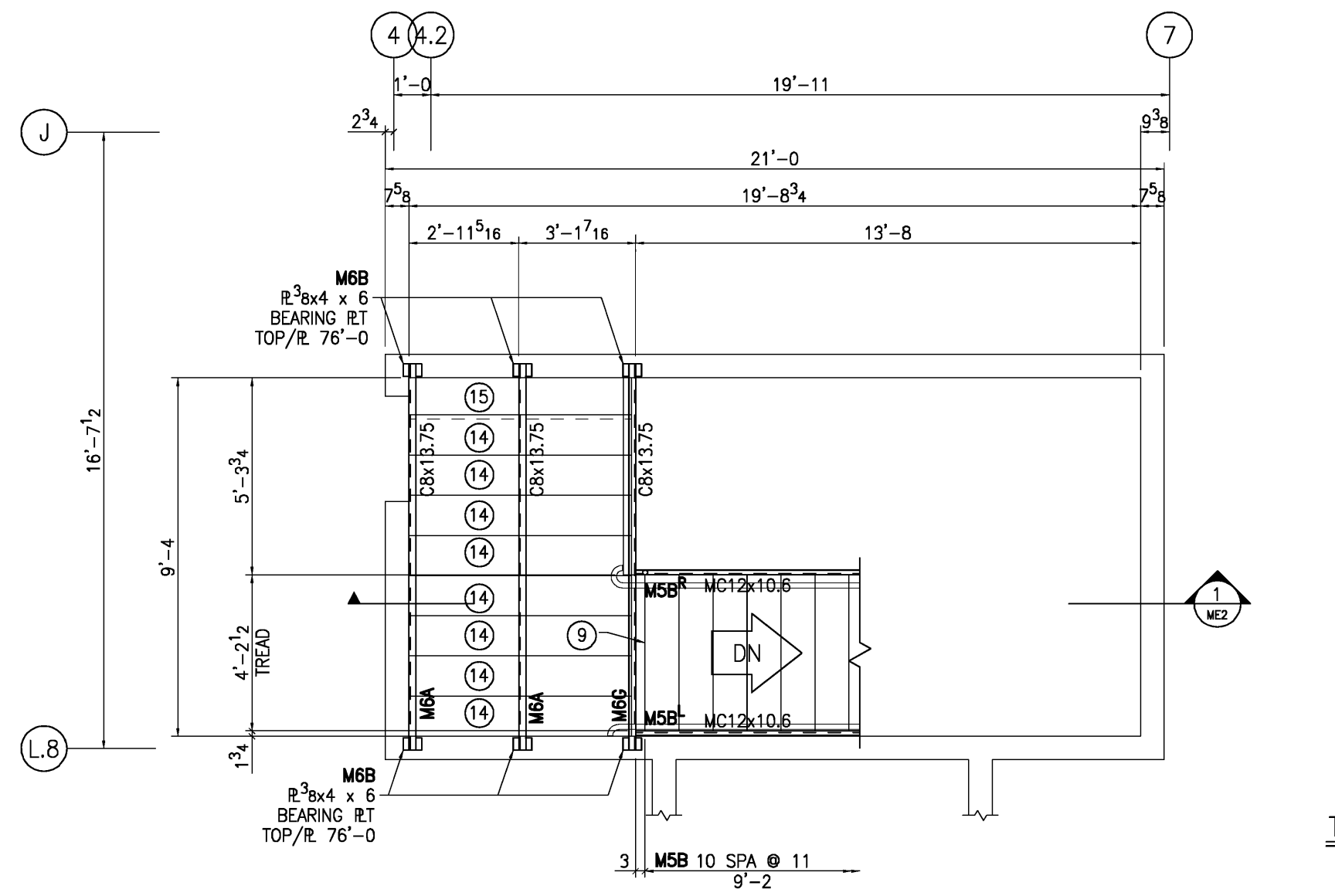
STAIR #1 BASEMENT
TOP/CB HEADERS EL 44'-11 5/8 @ LANDING



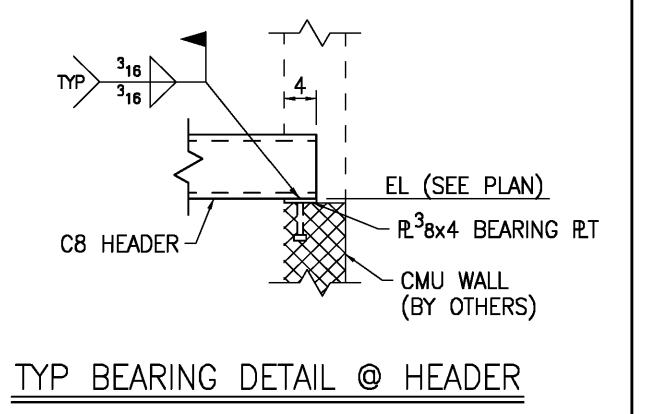
STAIR #1 1ST FLOOR
TOP/CB HEADERS EL 51'-9 @ FLOOR
TOP/CB HEADERS EL 58'-6 8 @ LANDING



STAIR #1 2ND FLOOR
TOP/CB HEADERS EL 65'-10 @ FLOOR
TOP/CB HEADERS EL 70'-4 3/4 @ LANDING



STAIR #1 3RD FLOOR
TOP/CB HEADERS EL 76'-8 @ FLOOR



SEE DRAWING ME2 FOR TYPICAL STAIR SECTIONS AND DETAILS



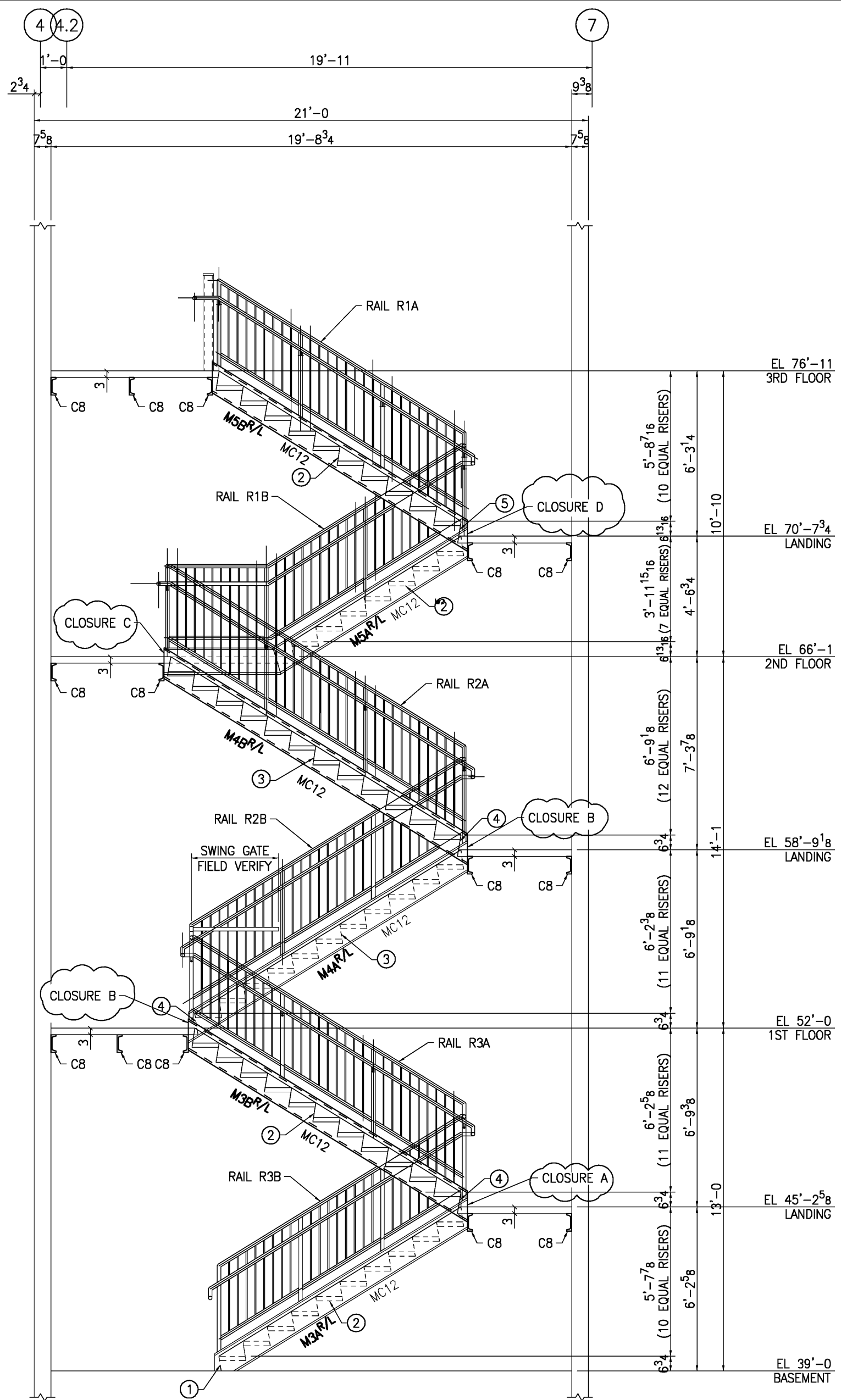
ERECTOR NOTE:
BACK CHARGES FOR REPAIRS OR ALTERATION TO OUR WORK WILL NOT BE ACCEPTED UNLESS APPROVED BY PRECISION WELDING & FABRICATION (207) 854-9330

PRINT RECORD		
DATE	NO	USE
4.7.09	E	RFI
6.30.09	2	REF
7.1.09	8	OFA
8-25-09	2	FIELD

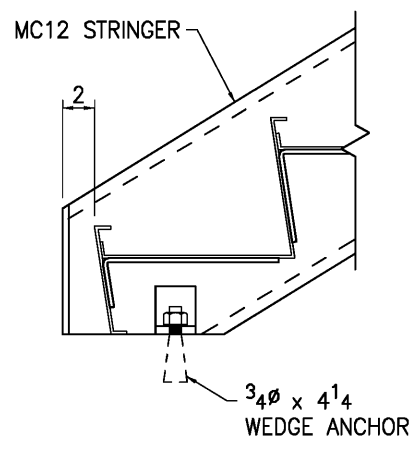
REVISIONS		
DATE	NO	BY

DRAWN	DATE	CHECKED	DATE	JOB NO.	DWG. NO.
				2251	ME1

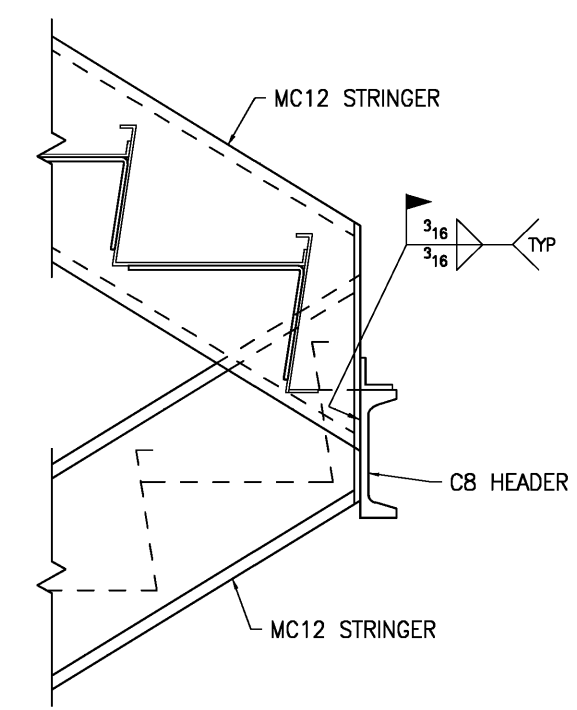
JST 4.2.09



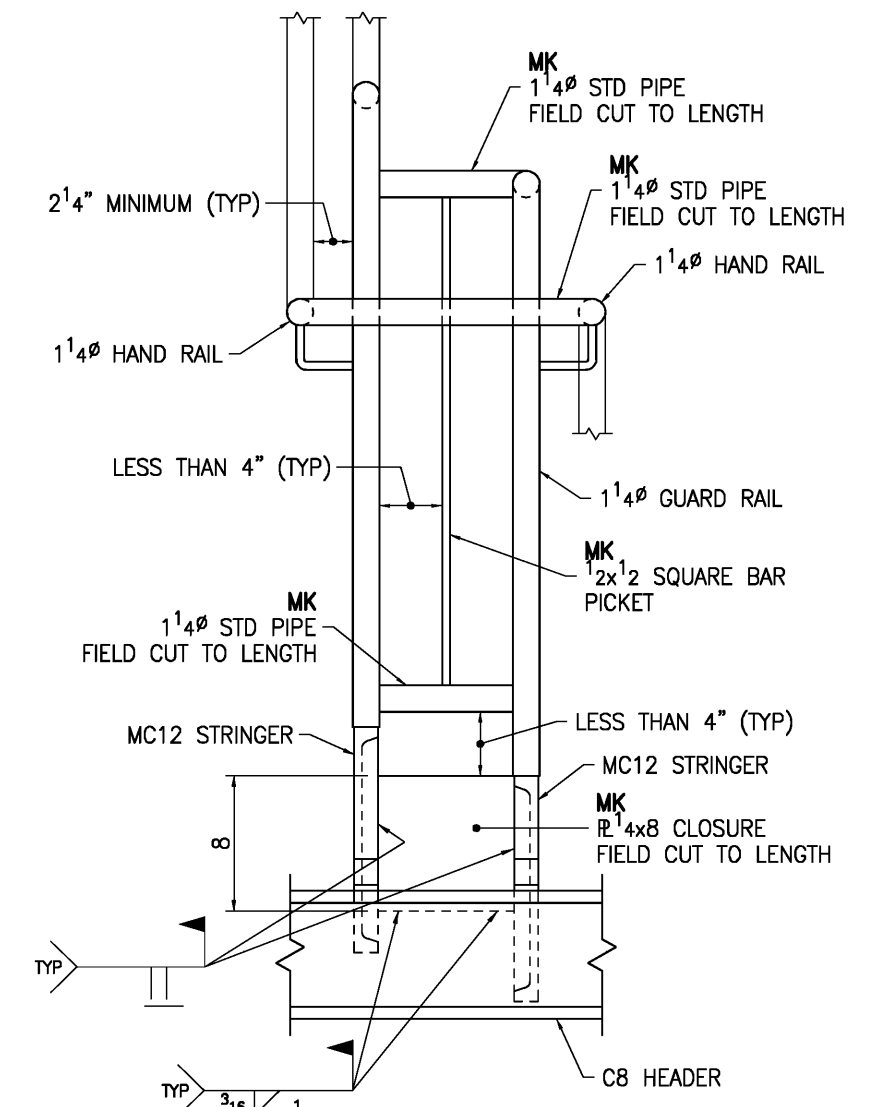
SECTION 1
A1/A703 ME2



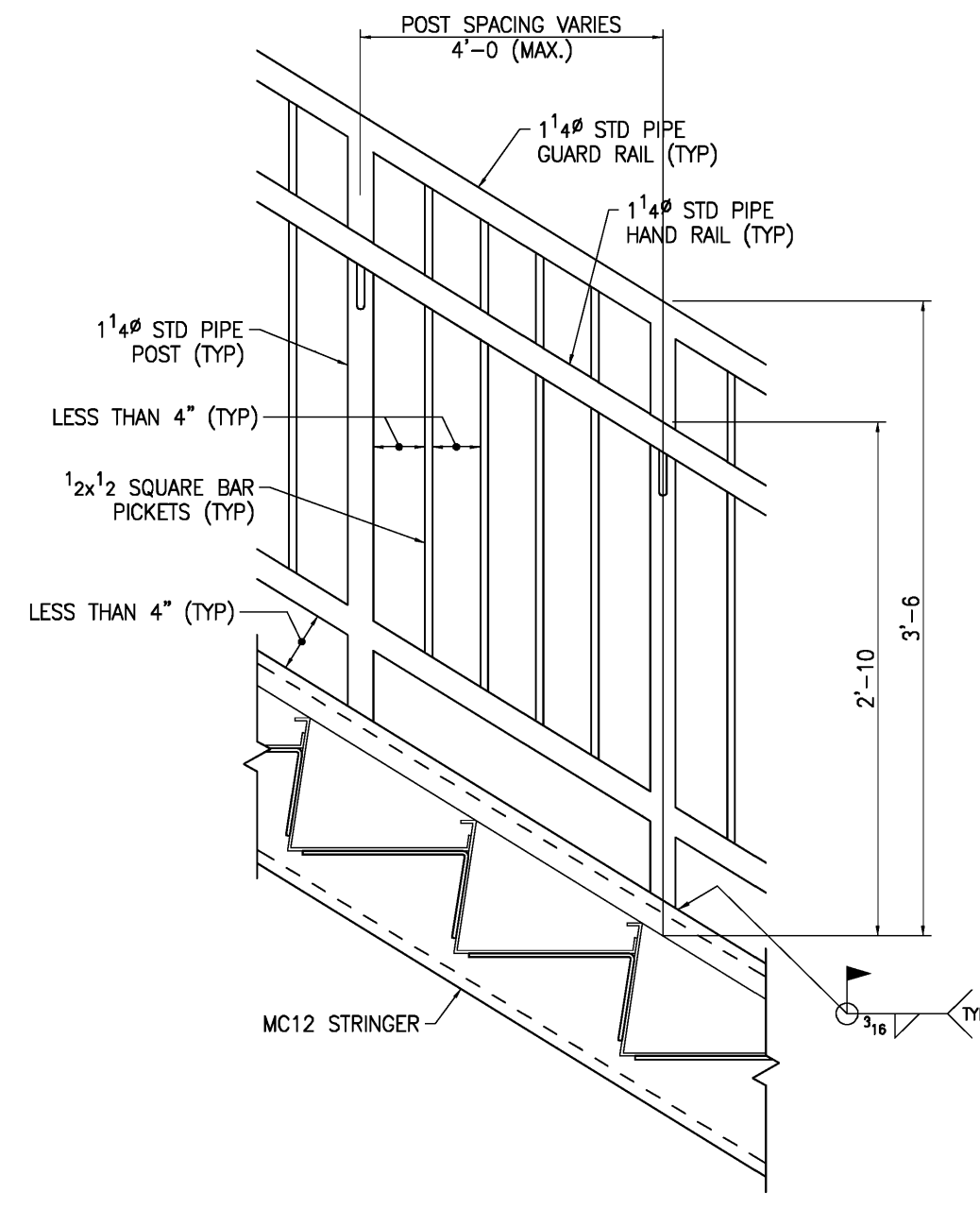
STRINGER @ BASEMENT



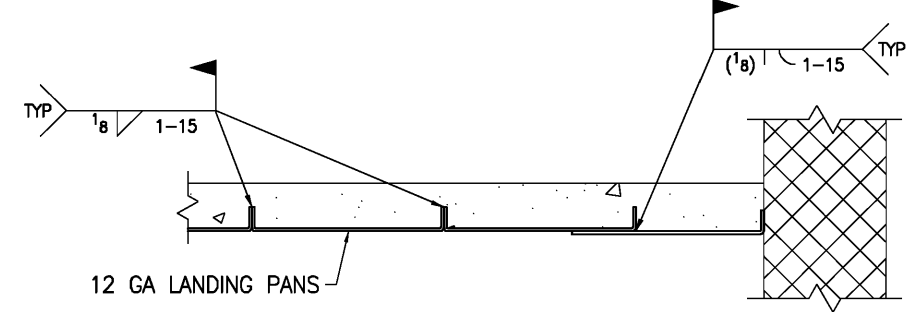
TYP STRINGER @ HEADER



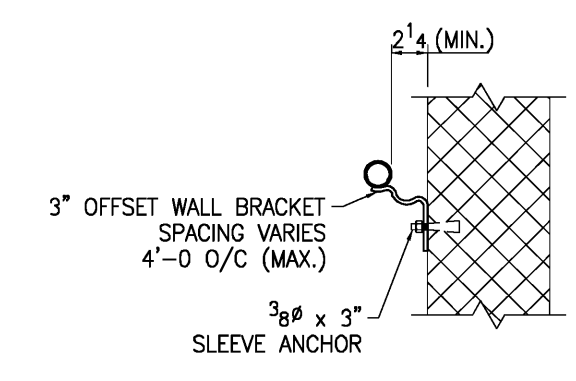
TYP DETAIL @ RAIL TRANSITION



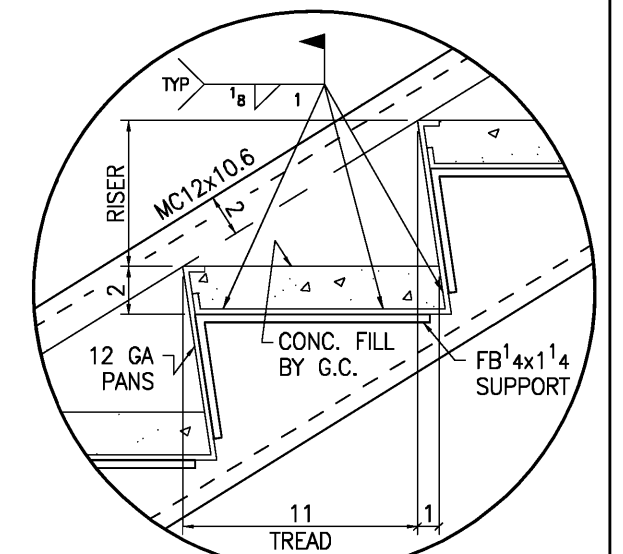
TYPICAL DETAIL @ CENTER RAIL



TYP DETAIL @ LANDING PANS



TYP DETAIL @ WALL RAIL



TYP TREAD & RISER DETAIL



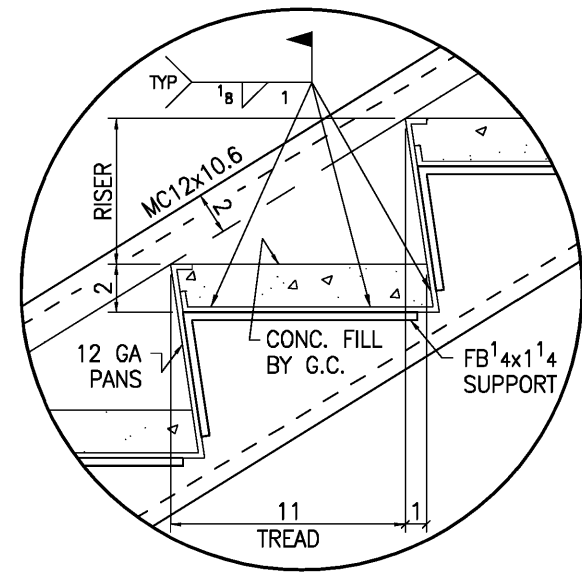
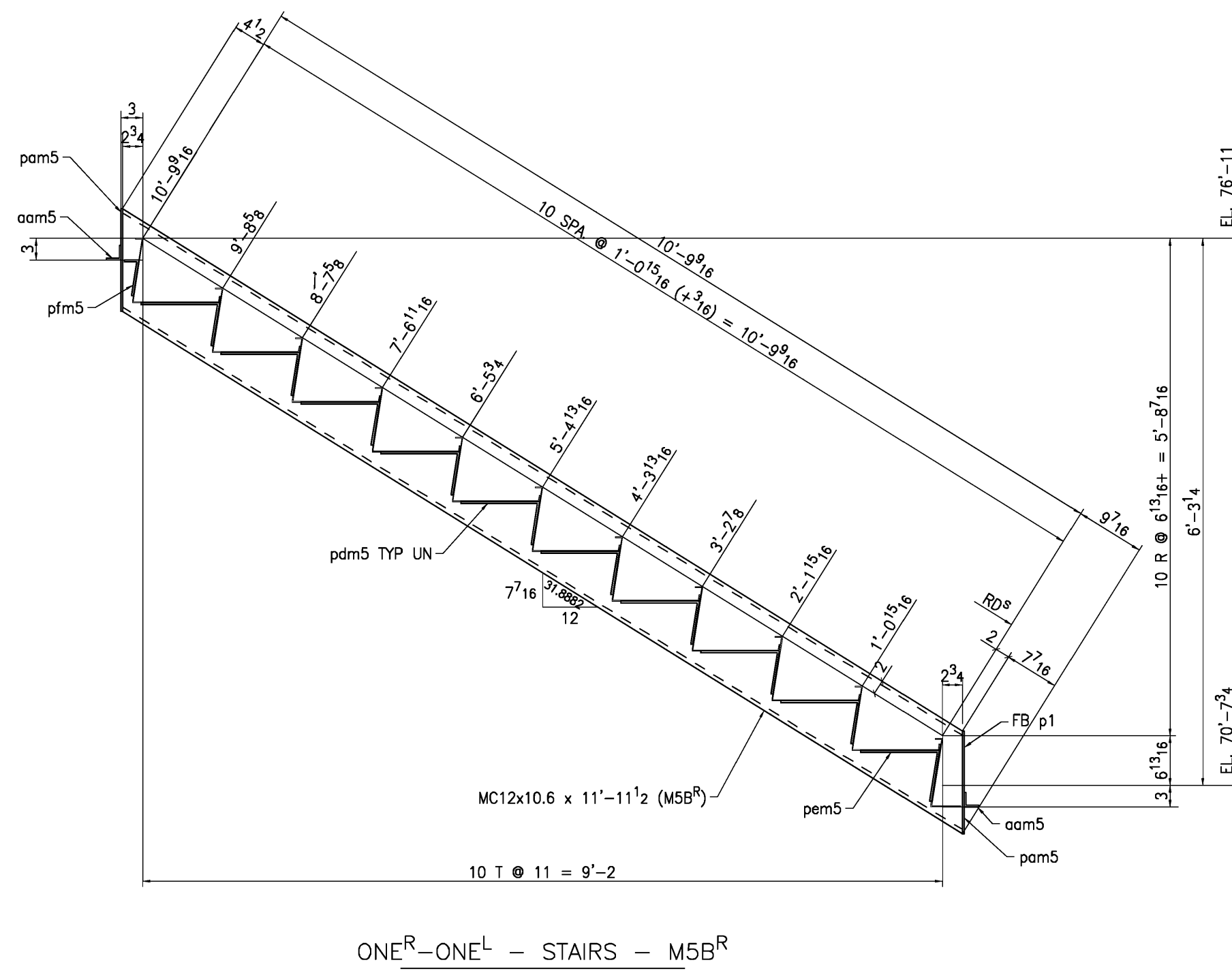
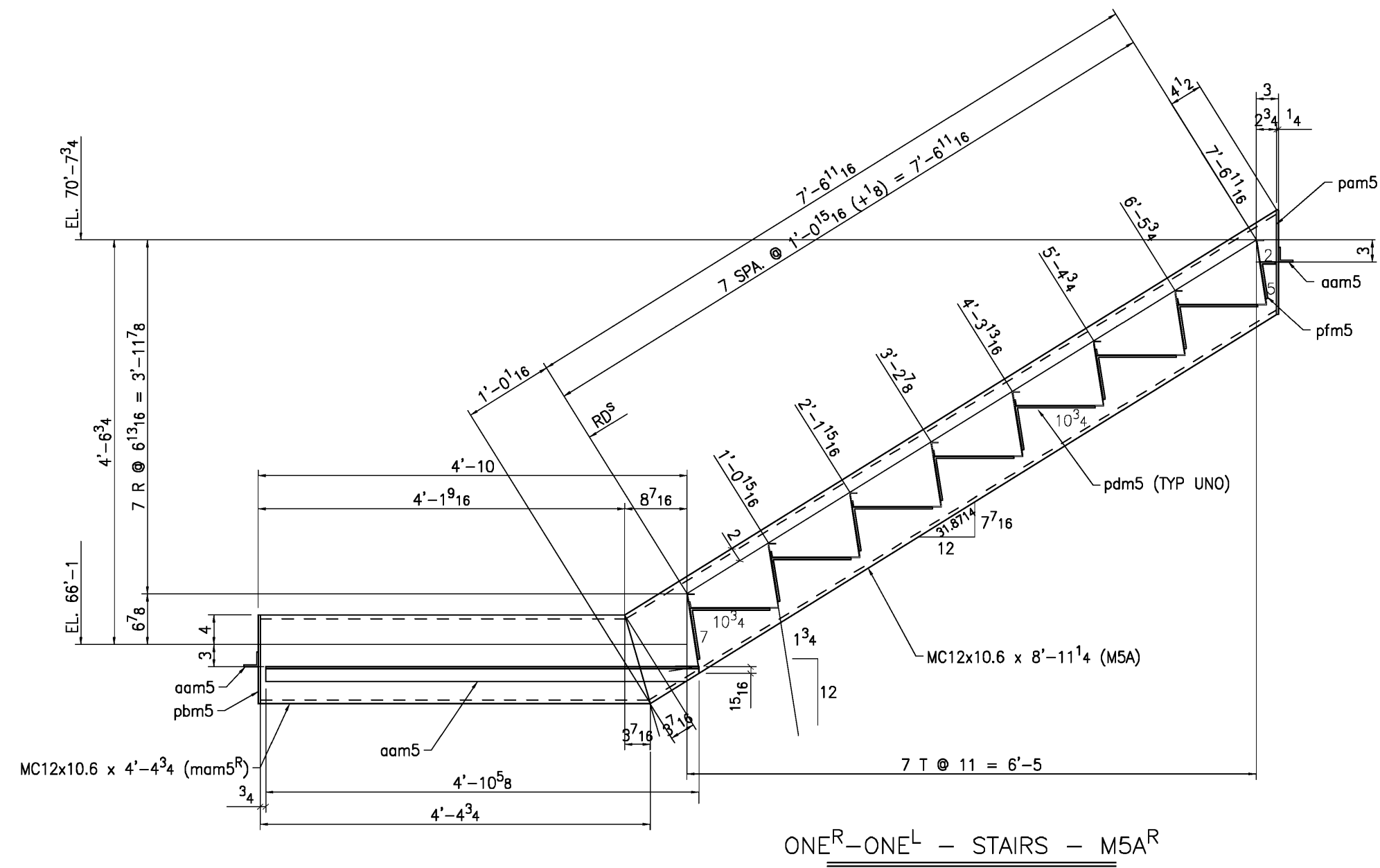
ERECTOR NOTE:
BACK CHARGES FOR REPAIRS OR ALTERATION TO OUR WORK WILL NOT BE ACCEPTED UNLESS APPROVED BY PRECISION WELDING & FABRICATION (207) 854-9330

ADDED CLOSURE R

PRINT RECORD		
DATE	NO	USE
4.7.09	E	RFI
7.1.09	8	O.F.A.
8-25-09	2	FIELD
9-9-09	2	FIELD

REVISIONS		
DATE	NO	BY

DRAWN	DATE	CHECKED	DATE	JST 4.7.09
JOB NO. 2251				DWG. NO. ME2



SHOP NOTE

STEEL: A36 TYP (UNO) SURFACE PREP: SSPC-SP2
 HOLES: 15/16" TYP (UNO) PAINT: NO PAINT TYP (UNO)
 WELDS: E70LH
 FIELD CONN: 7/8" A325-TC TYP (UNO) REF. DWGS: ME1, ME2

PRINT RECORD		
DATE	NO	USE
7.1.09	8	O.F.A.
8.11.09	2	SHOP

REVISIONS		
DATE	NO	BY



DRAWN DATE: JST 5.15.09 CHECKED DATE: PFS 8-11-09 JOB NO. **2251** DWG. NO. **M5**

SHIP		BILL OF MATERIAL			JOB NO. 2251	DWG. NO. M5
MARK	QUAN	MARK	SHAPE	FEET/INCHES	WEIGHT	REMARKS
M5A ^R /L	2		STAIR STRINGER			1 ^R -1 ^L A992
ONE	pam5		R ¹ 4x1 ¹ / ₂	1 2 ¹ / ₈	1.50	
	4	aam5	L2x2x1 ⁴ / ₄	0 1 ¹ / ₂	1.60	
	2	M5A ^R /	MC12x10.6	8 11 ¹ / ₄	189.48	1 ^R -1 ^L
	12	pdm5	FB ¹ 4x1 ¹ / ₄	1 4 ¹ / ₄	17.27	BENT
	2	pfm5	FB ¹ 4x1 ¹ / ₄	0 6 ¹ / ₂	1.15	BENT
ONE	pbm5		R ¹ 4x1 ¹ / ₂	1 0 ¹ / ₄	1.30	
	2	aam5	L2x2x1 ⁴ / ₄	4 10 ⁵ / ₈	31.17	
	2	mam5 ^R /	MC12x10.6	4 4 ³ / ₄	93.19	1 ^R -1 ^L
	2	pem5	FB ¹ 4x1 ¹ / ₄	1 5 ¹ / ₄	3.05	BENT
M5B ^R /L	2		STAIR STRINGER			1 ^R -1 ^L A992
	4	pam5	R ¹ 4x1 ¹ / ₂	1 2 ¹ / ₈	6.00	
	4	aam5	L2x2x1 ⁴ / ₄	0 1 ¹ / ₂	1.60	
	2	M5B ^R /L	MC12x10.6	11 11 ¹ / ₂	253.52	1 ^R -1 ^L
	18	pdm5	FB ¹ 4x1 ¹ / ₄	1 4 ¹ / ₄	25.90	BENT
	2	pfm5	FB ¹ 4x1 ¹ / ₄	0 6 ¹ / ₂	1.15	BENT
	2	pem5	FB ¹ 4x1 ¹ / ₄	1 5 ¹ / ₄	3.05	BENT

PAINT 1-SHOP COAT SHERWIN-WILLIAMS E90RC38

