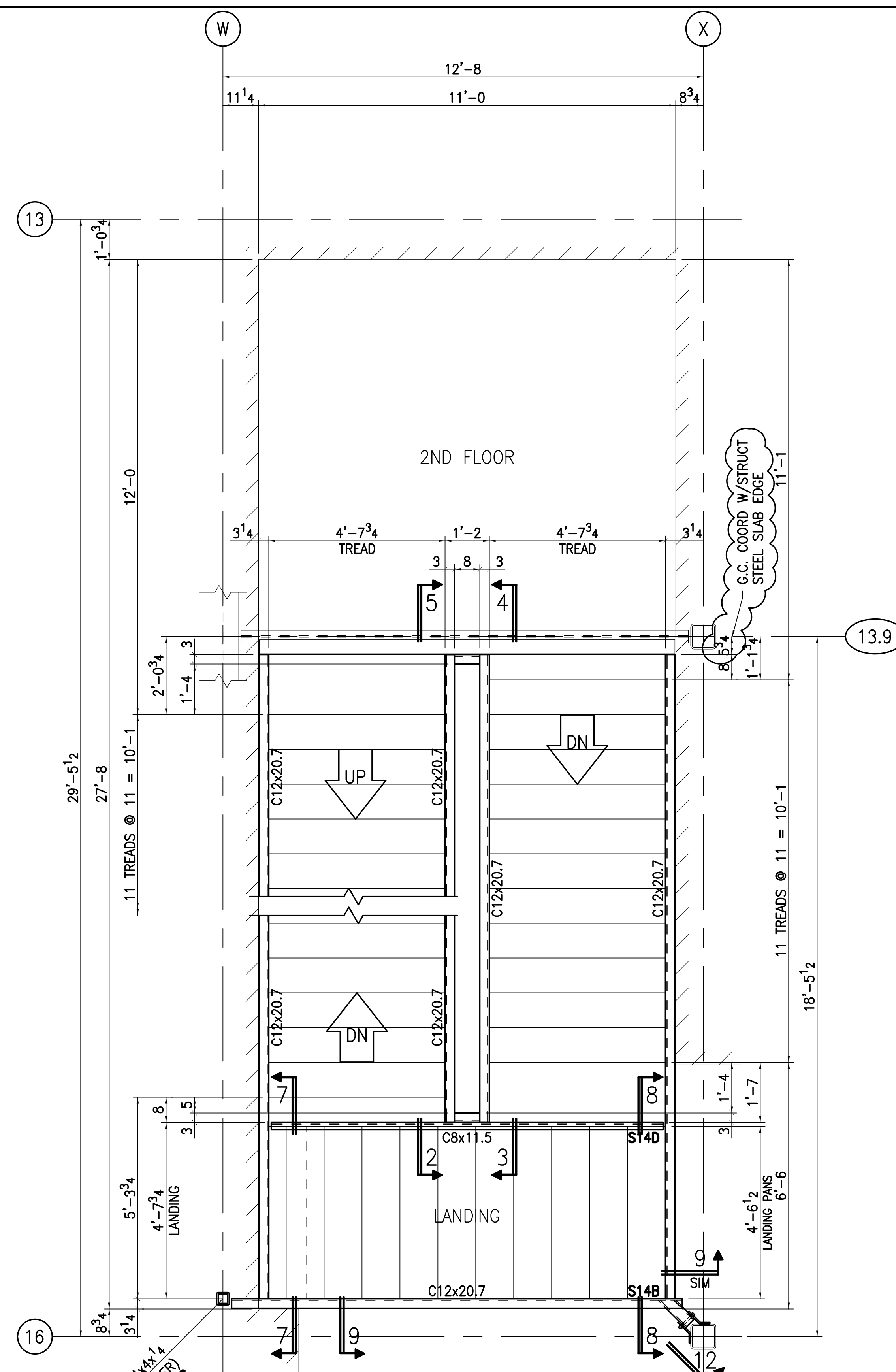
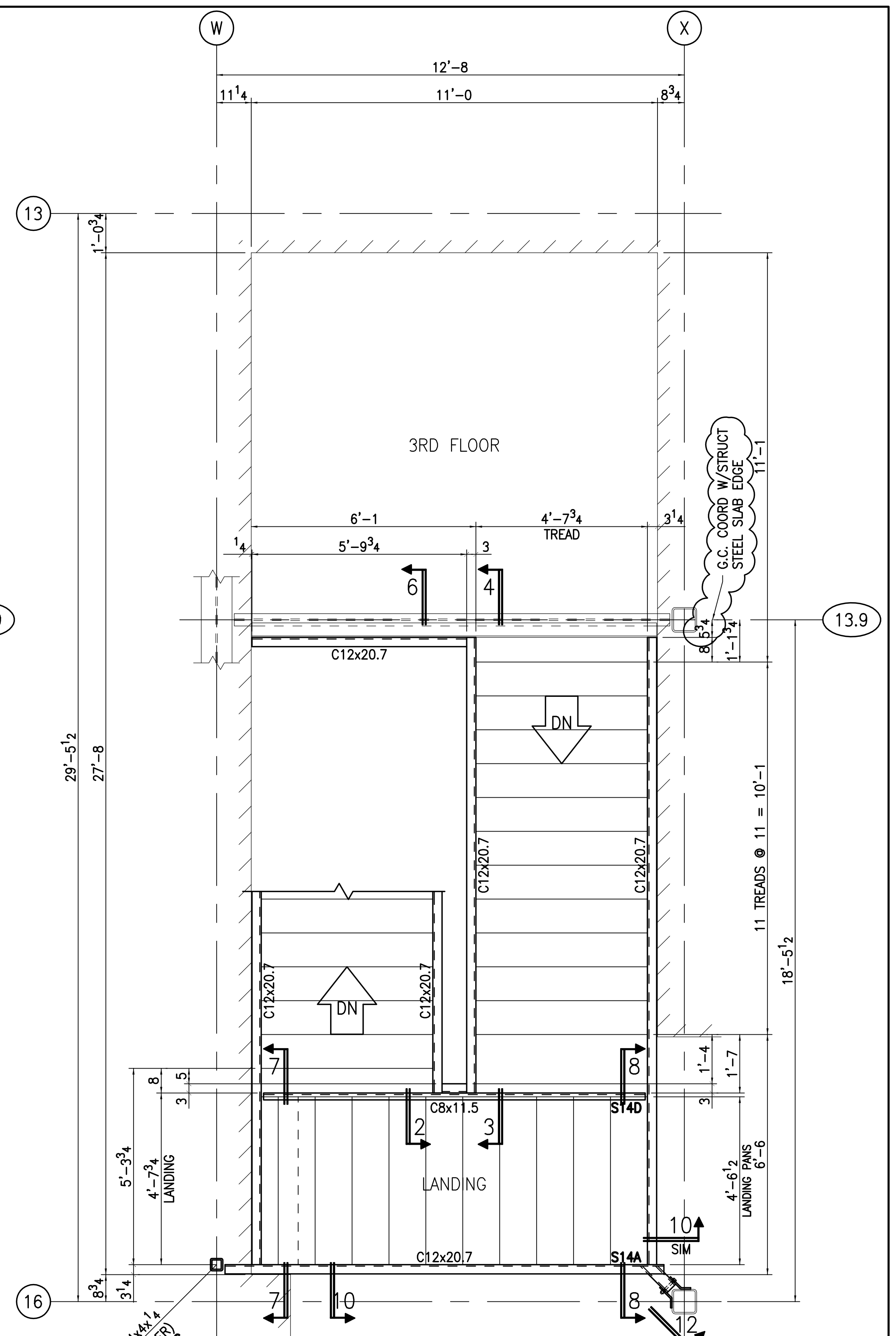


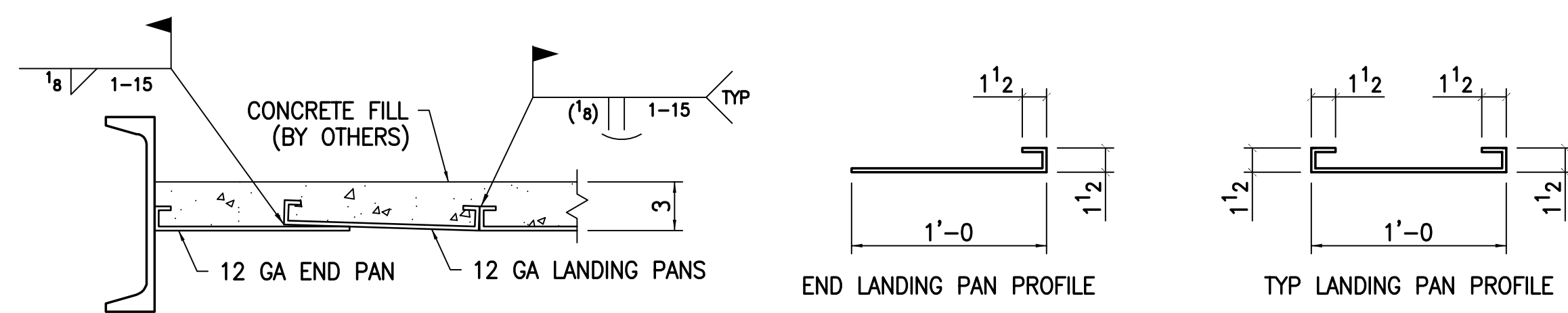
1ST FLOOR PLAN - STAIR 1



2ND FLOOR PLAN - STAIR 1



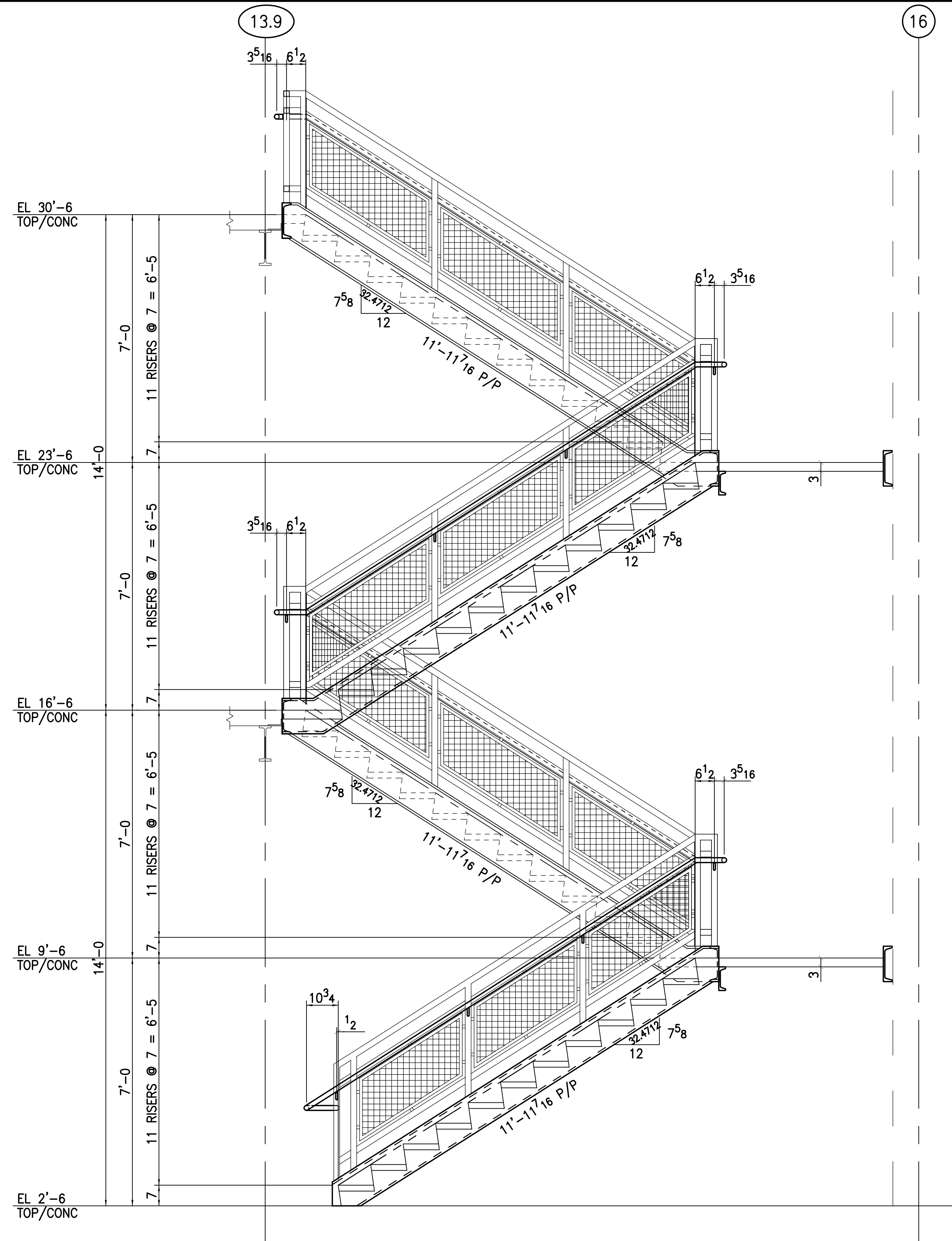
3RD FLOOR PLAN - STAIR 1



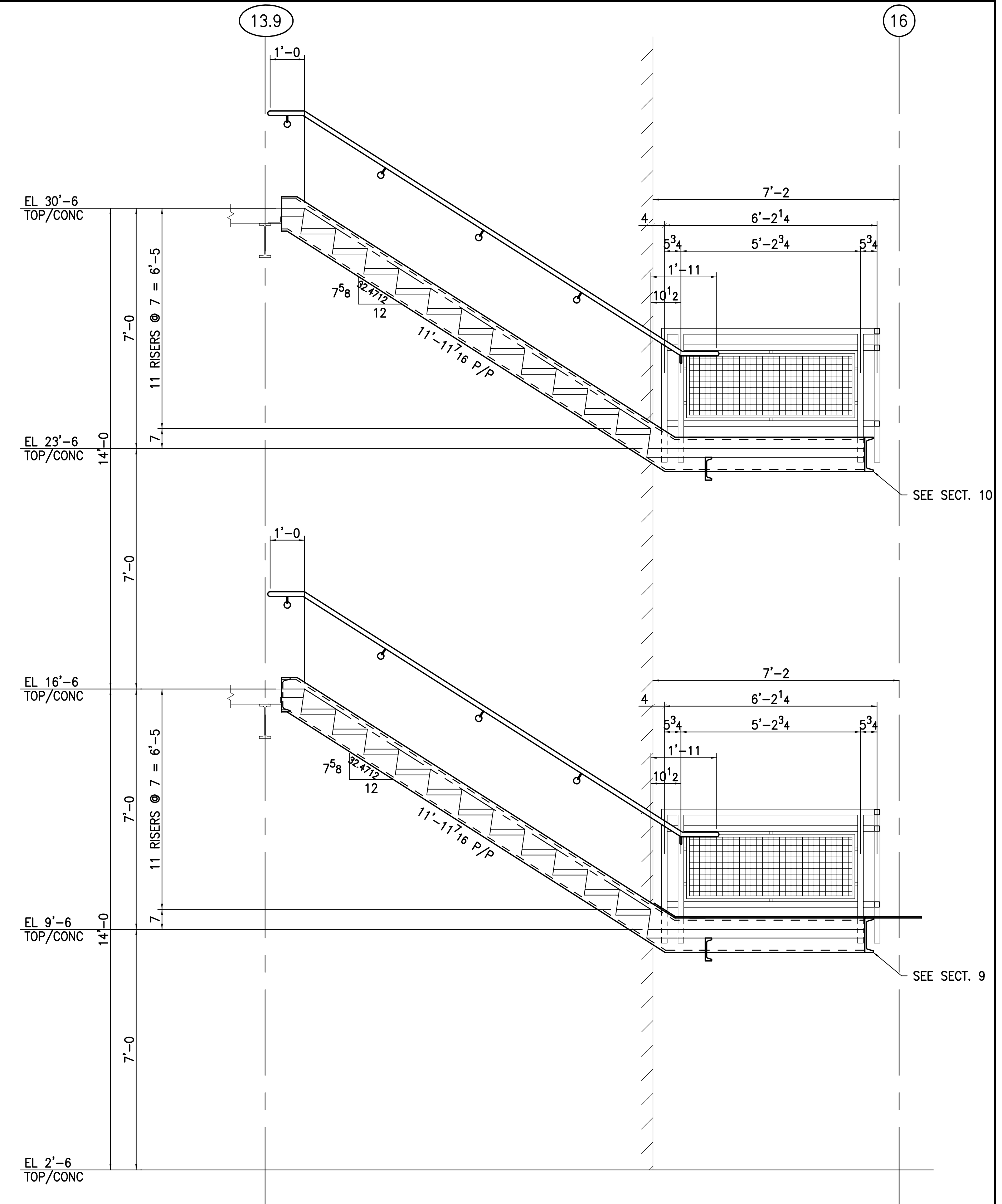
TYPICAL LANDING PAN DETAILS



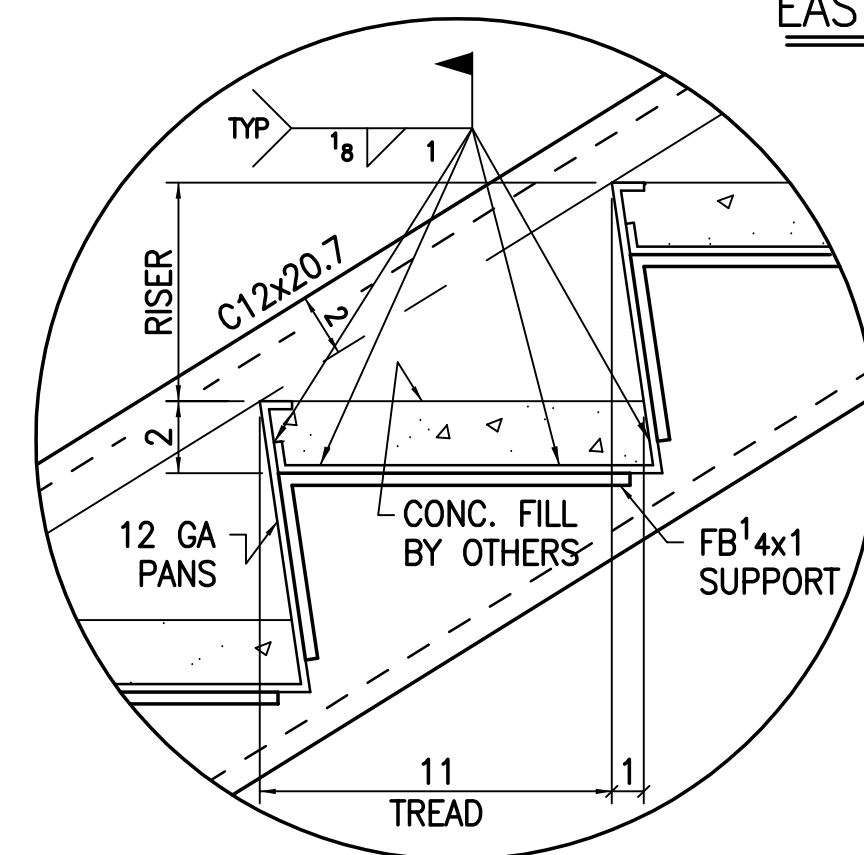
SPEC: W - A992 TS, HSS - A500B PIPE - A53B L, R, FB, C, MC - A36			
WELDING: E70LH			
HOLES: 13/16" TYP (UNO)			
PREP: SSPC-SP2			
FINISH: 1-S/C SHERWIN WILLIAMS KEM BOND HS (GRAY) B50AZ8 UNIVERSAL METAL PRIMER 2.0 MIL DFT			
DATE:	ISSUE:	DRAWN:	JOB NO.
3.24.14	FOR APP'L	JST	
1			DRAWING NO.
2			S10
3			
4			



CENTER ELEVATION - STAIR 1
LOOKING EAST

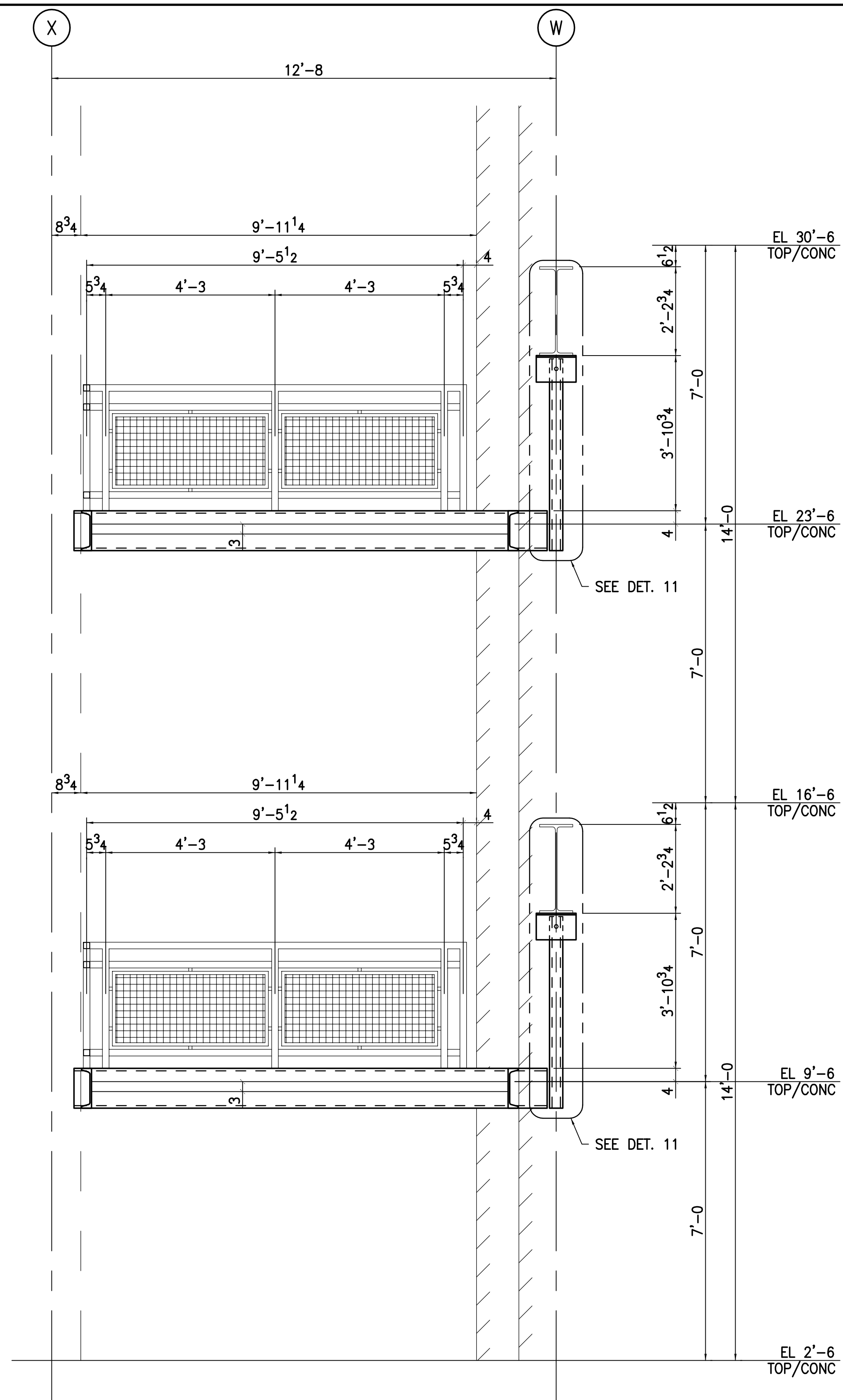


EAST WALL ELEVATION - STAIR 1
LOOKING EAST

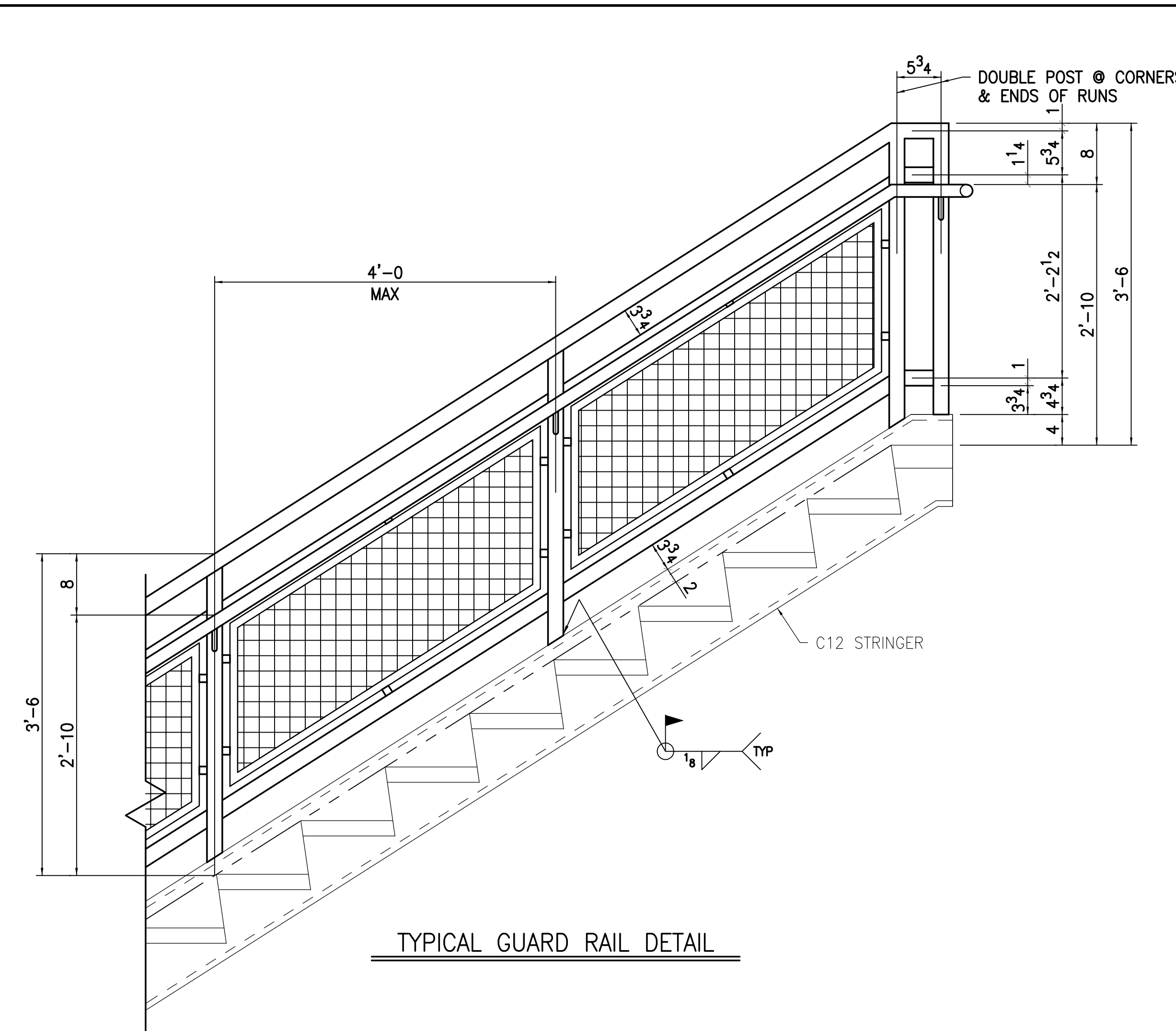


TYP TREAD & RISER DETAIL

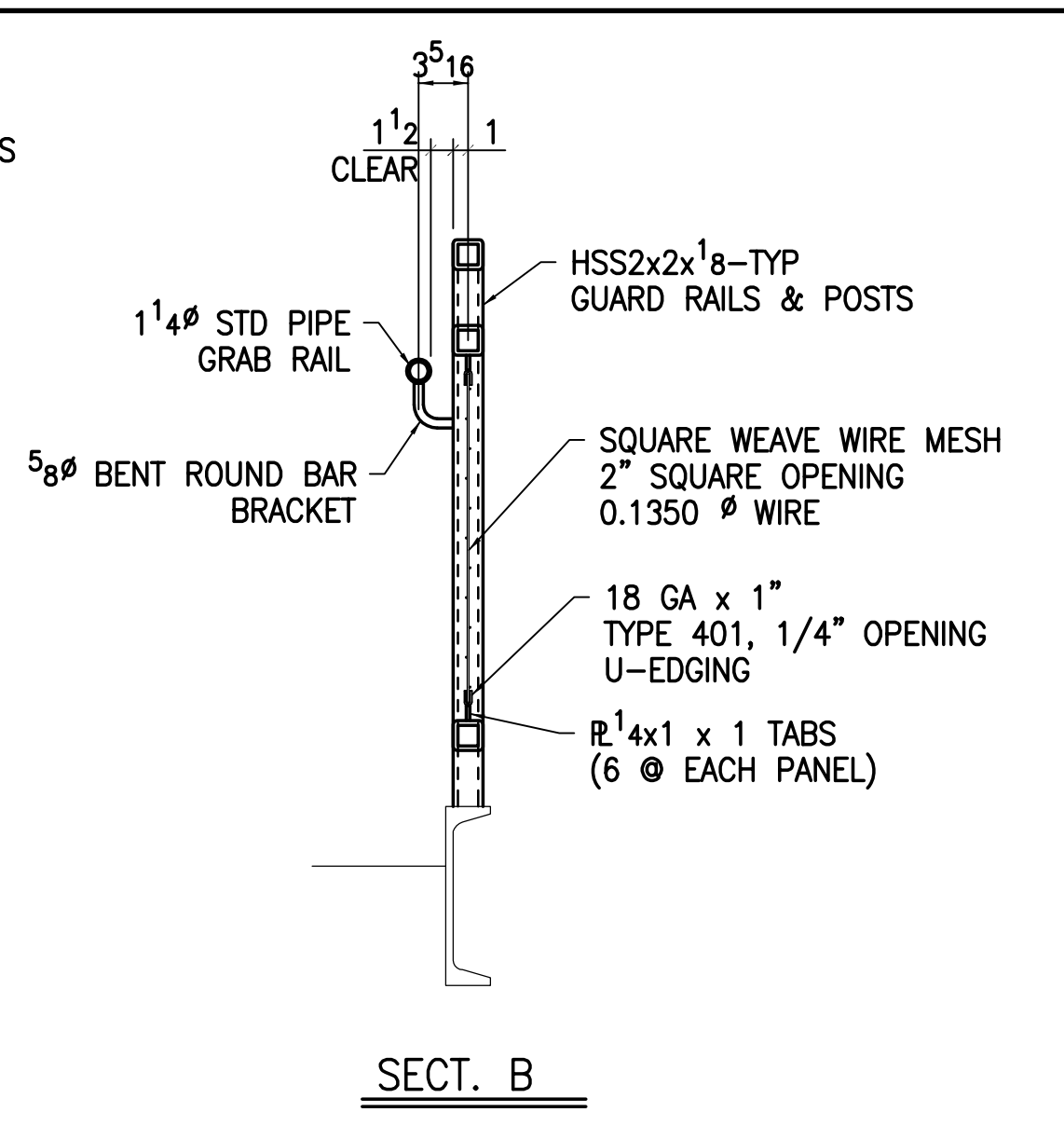
SPEC: W - A992 TS, HSS - A500B PIPE - A53B L, R, FB, C, MC - A36			
WELDING: E70LH			
HOLES: 1 3/16" TYP (UNO)			
PREP: SSPC-SP2			
FINISH: 1-S/C SHERWIN WILLIAMS KEM BOND HS (GRAY) B50AZ8 UNIVERSAL METAL PRIMER 2.0 MIL DFT			
DATE: 3.24.14	ISSUE: FOR APP'L	DRAWN: JST	JOB NO.
1			DRAWING NO.
2			S11
3			
4			



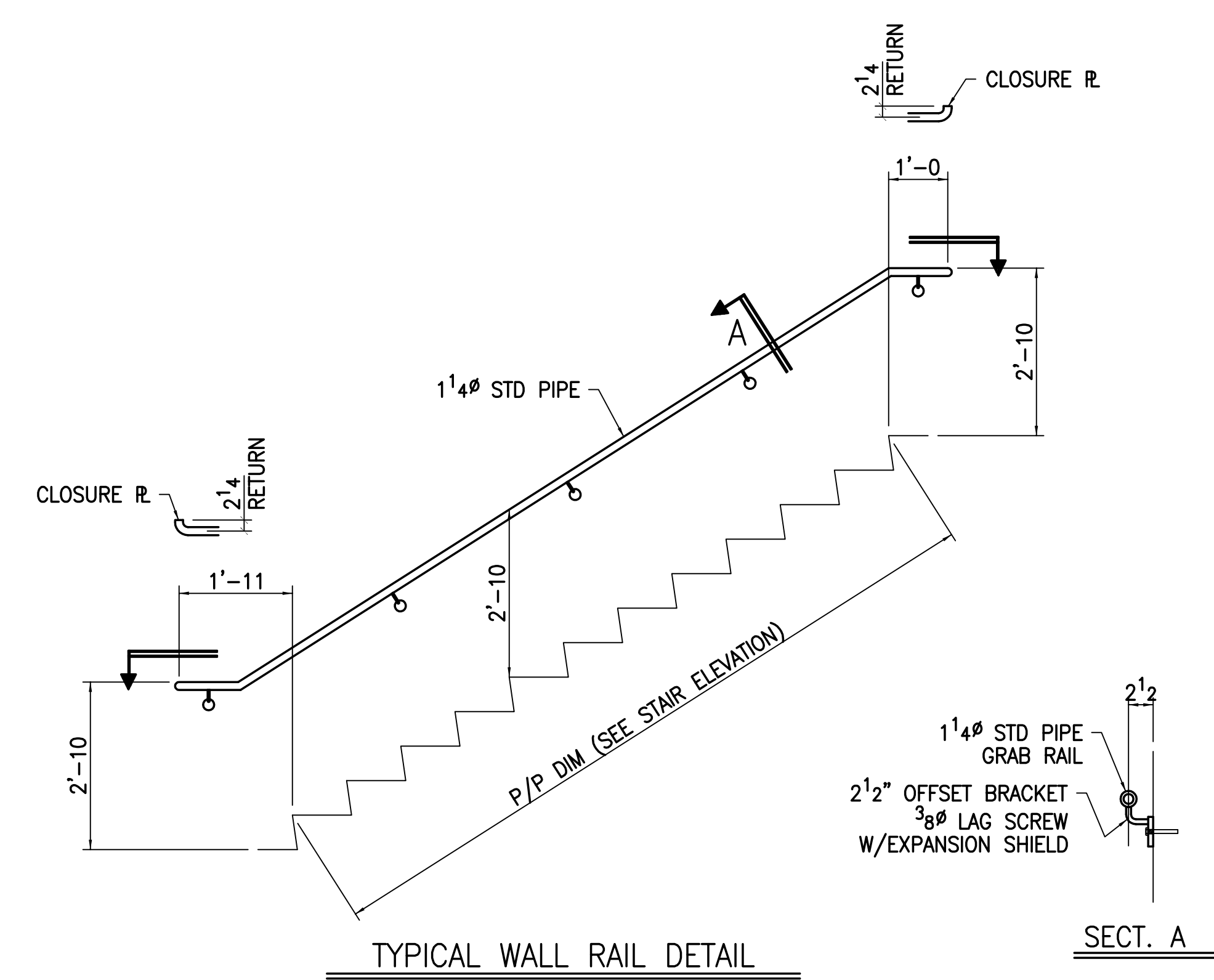
SOUTH WALL ELEVATION - STAIR 1
LOOKING SOUTH



TYPICAL GUARD RAIL DETAIL

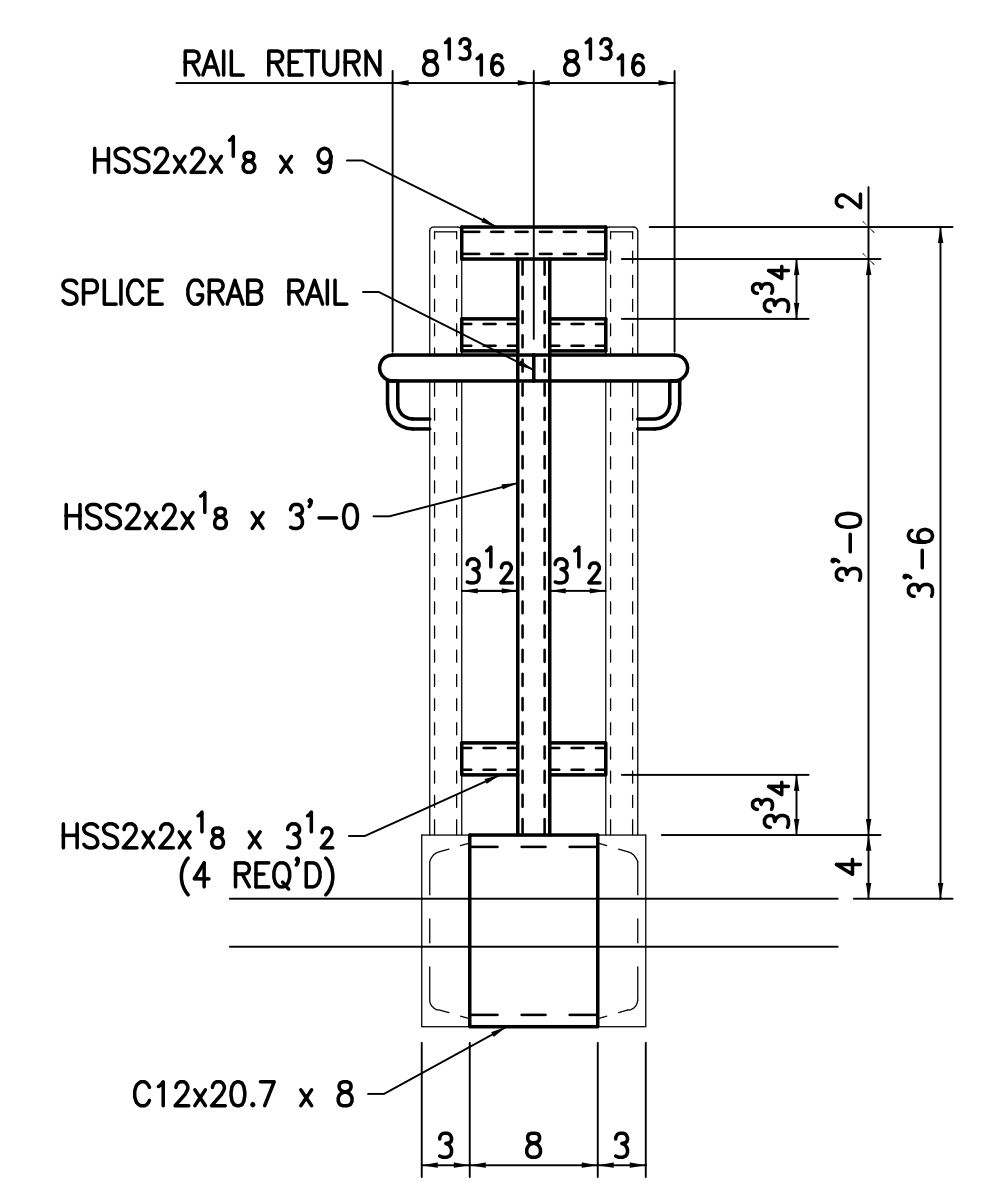


SECT. B



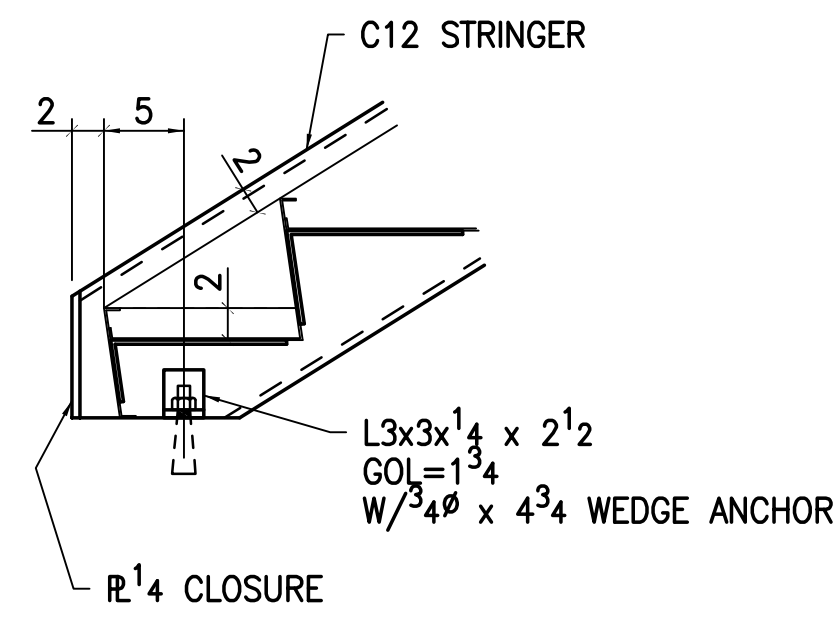
TYPICAL WALL RAIL DETAIL

SECT. A

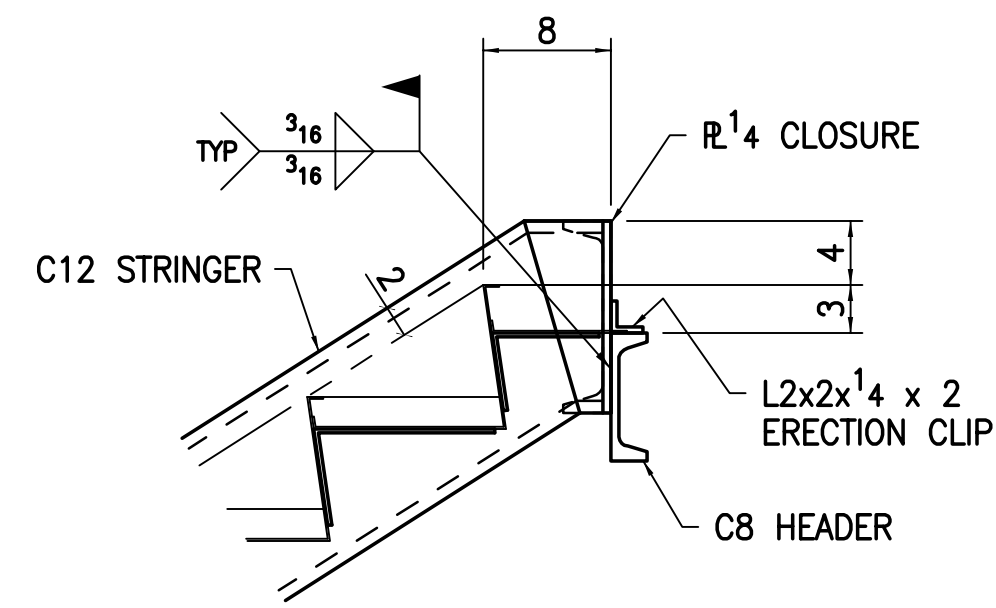


TYPICAL STAIR RAIL TRANSITION

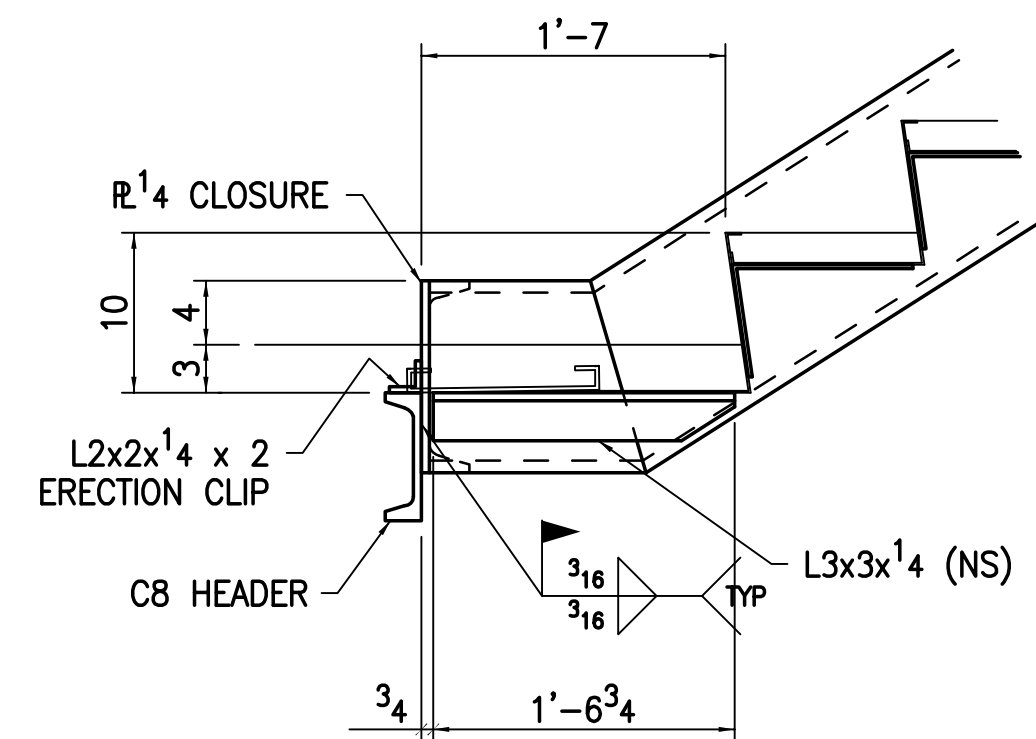
SPEC: W - A992 TS, HSS - A500B PIPE - A53B L, R, FB, C, MC - A36			
WELDING: E70LH			
HOLES: 13/16" TYP (UNO)			
PREP: SSPC-SP2			
FINISH: 1-S/C SHERWIN WILLIAMS KEM BOND HS (GRAY) B50AZ8 UNIVERSAL METAL PRIMER 2.0 MIL DFT			
DATE:	ISSUE:	DRAWN:	JOB NO.
3.24.14	FOR APP'L	JST	
1			DRAWING NO. S12
2			
3			
4			



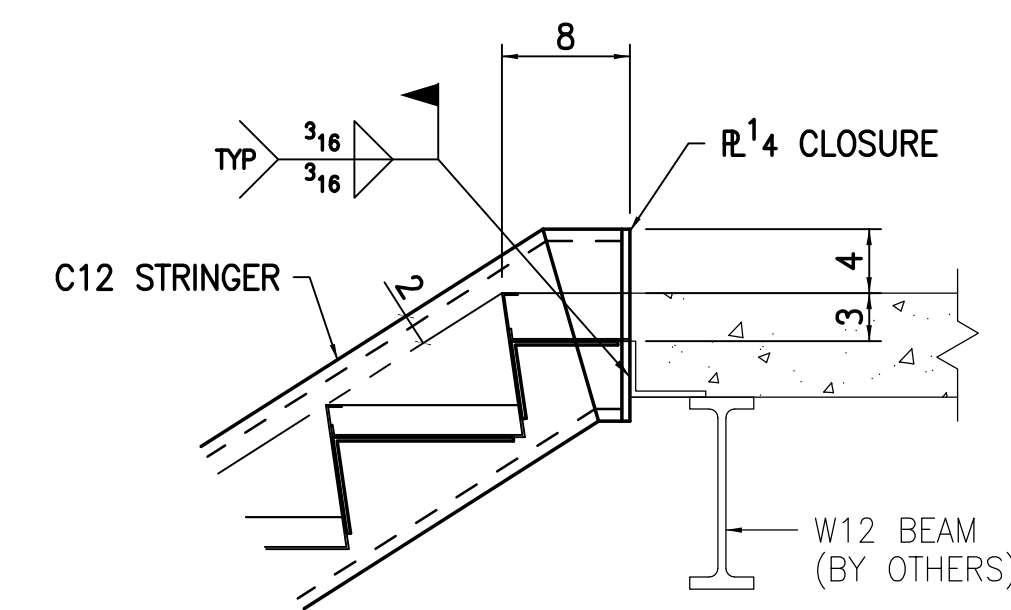
SECT. 1



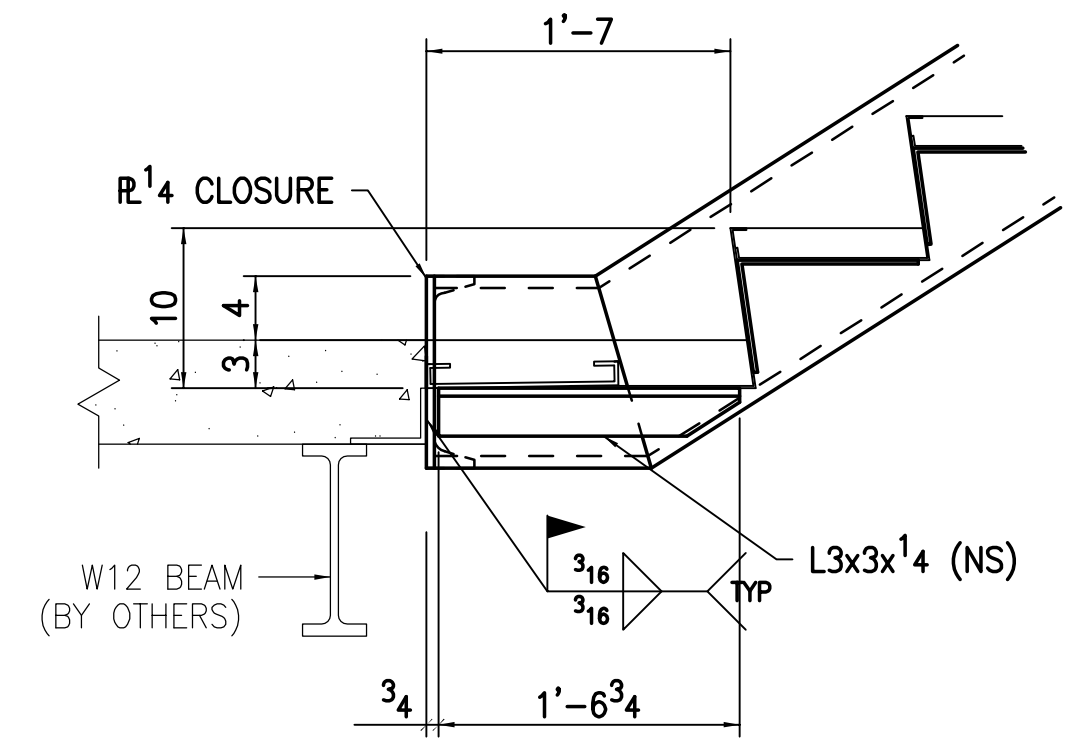
SECT. 2



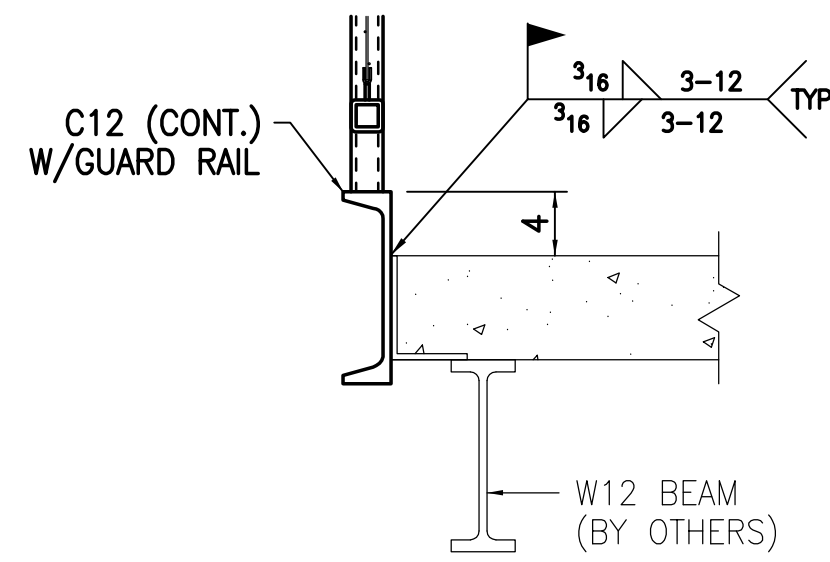
SECT. 3



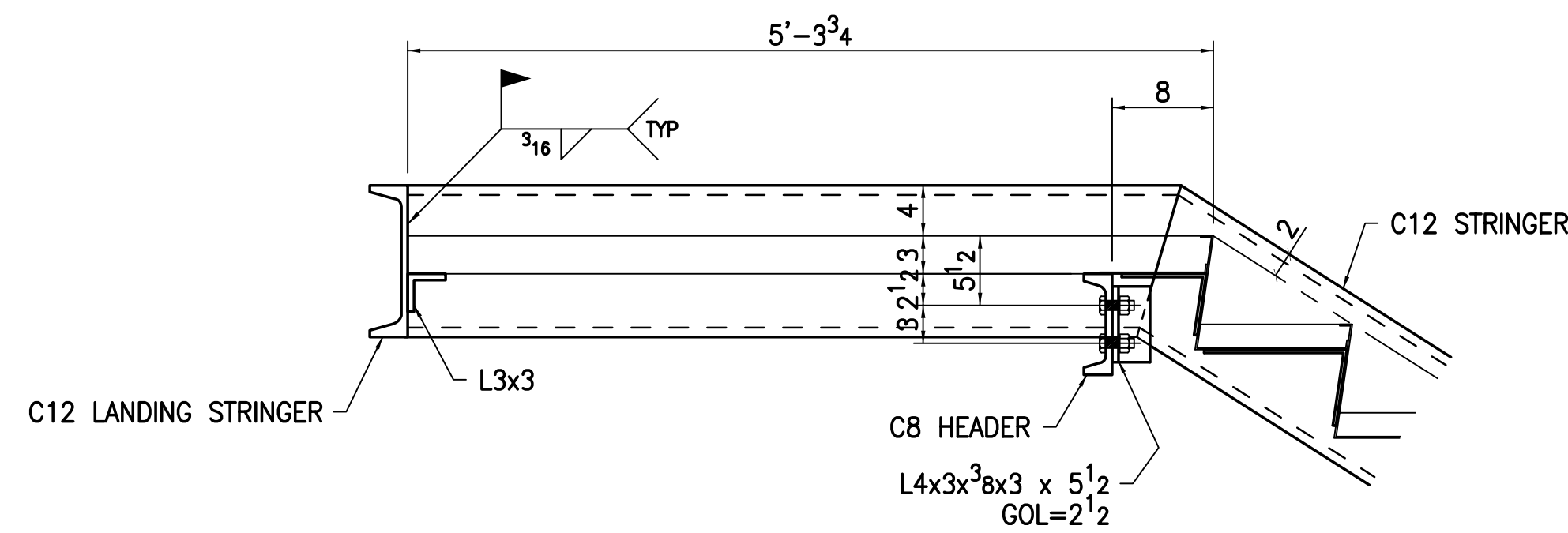
SECT. 4



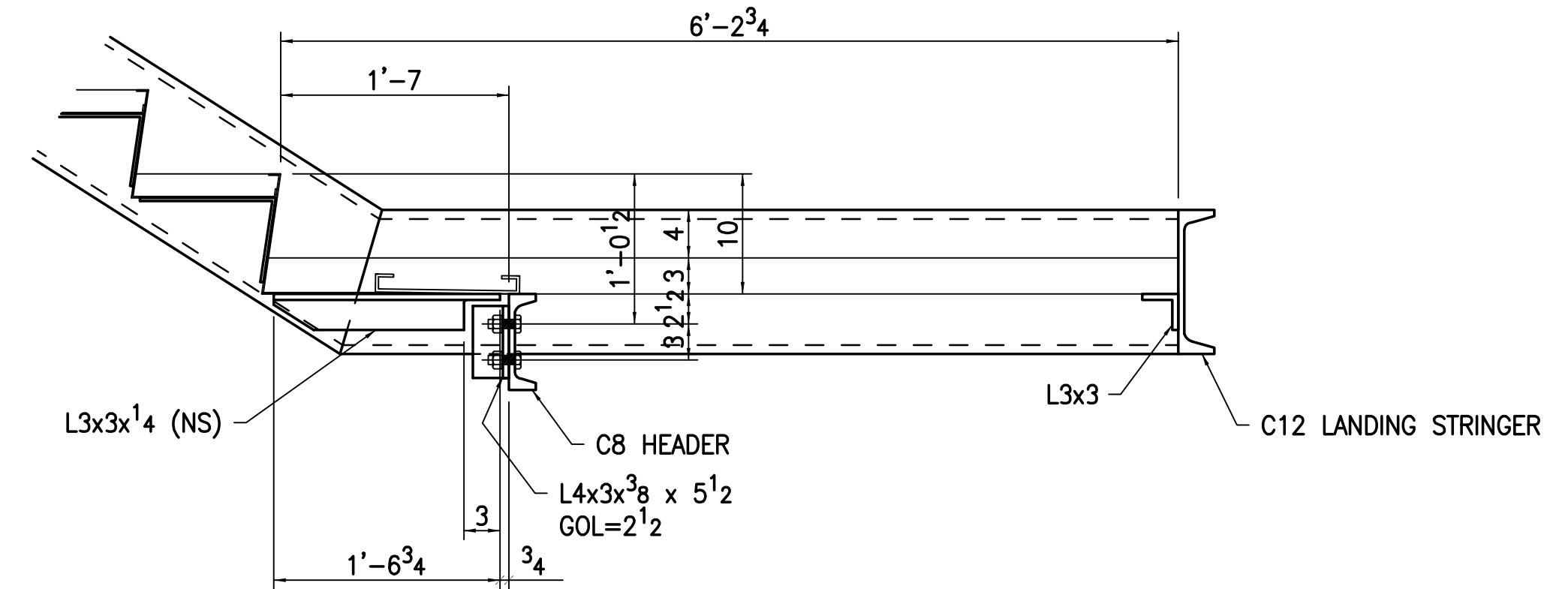
SECT. 5



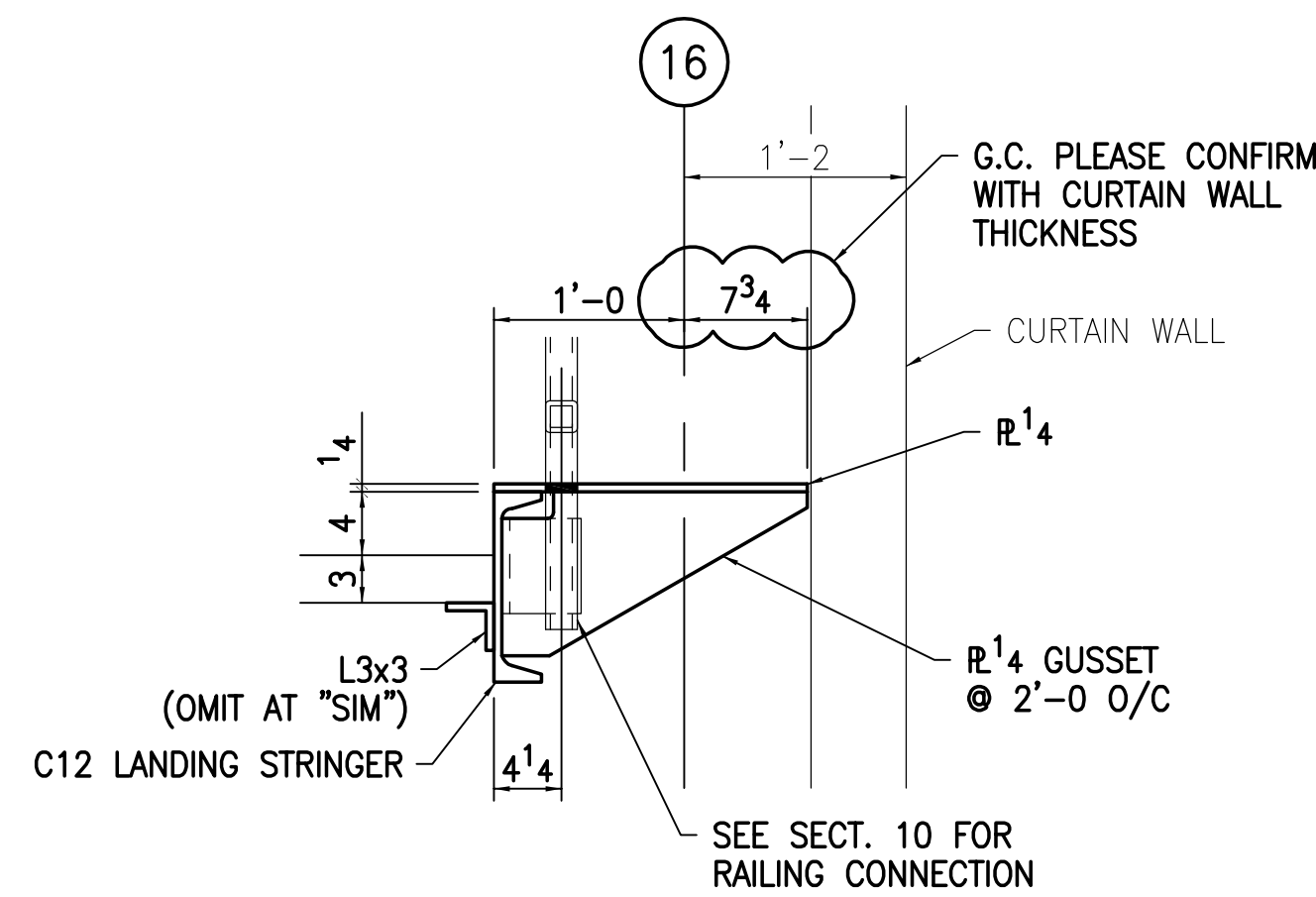
SECT. 6



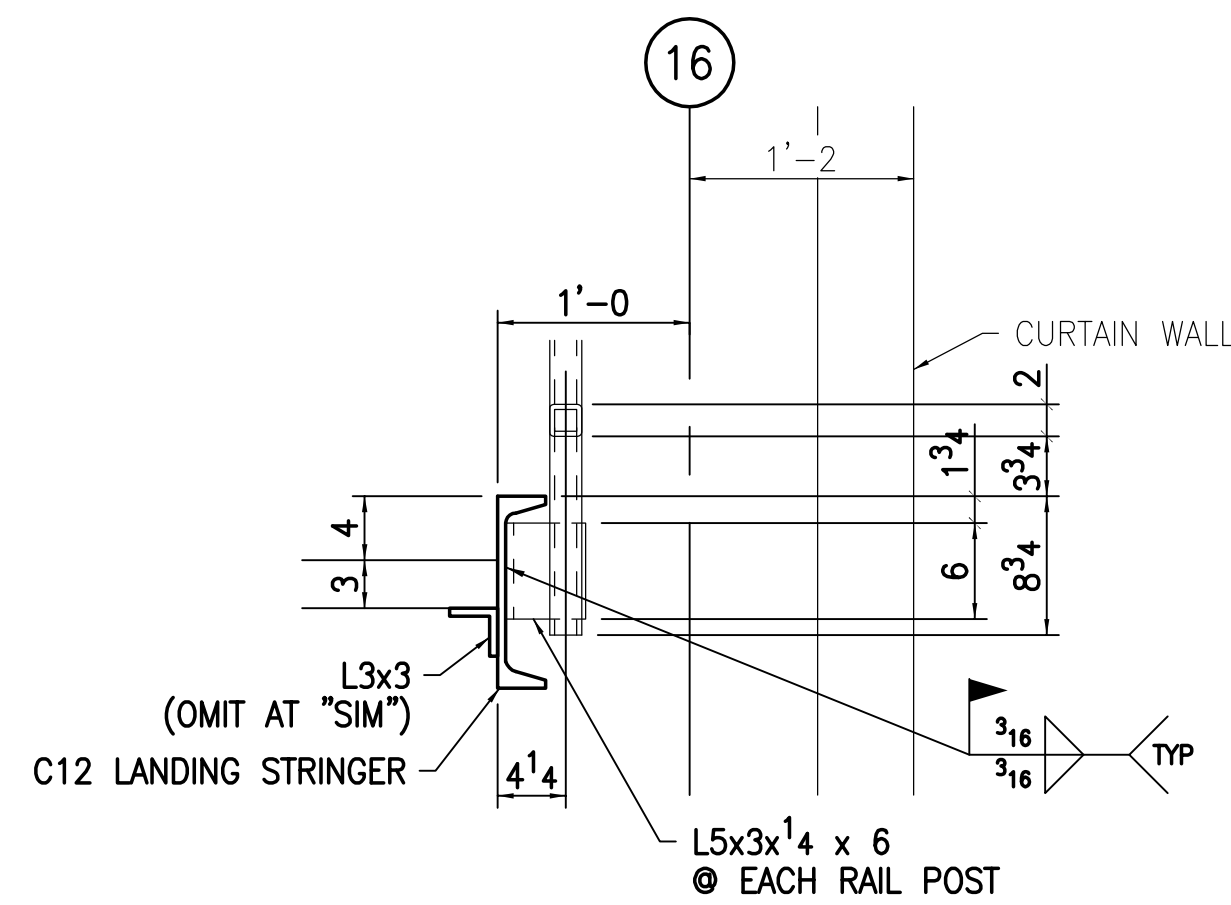
SECT. 7-7



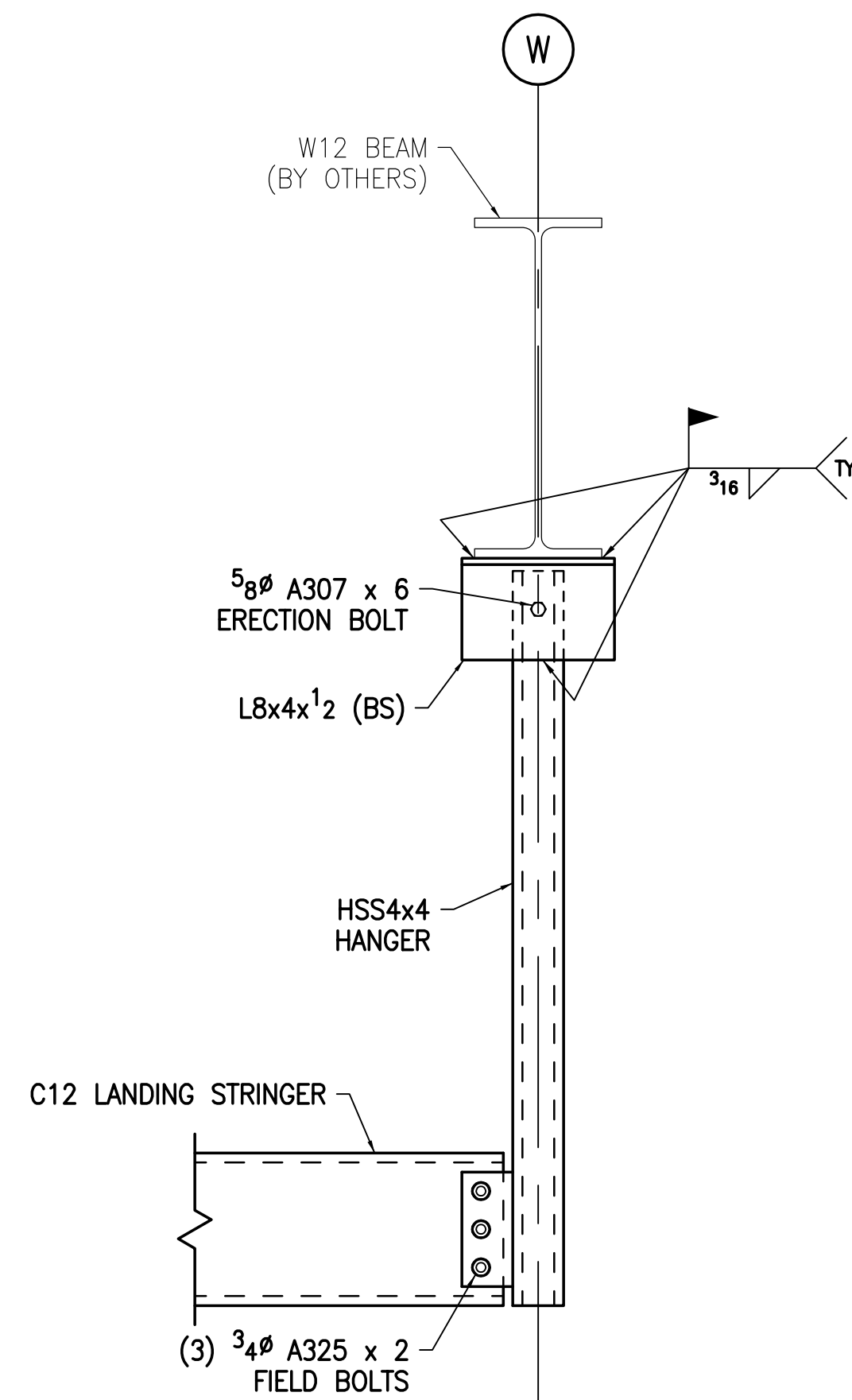
SECT. 8-8



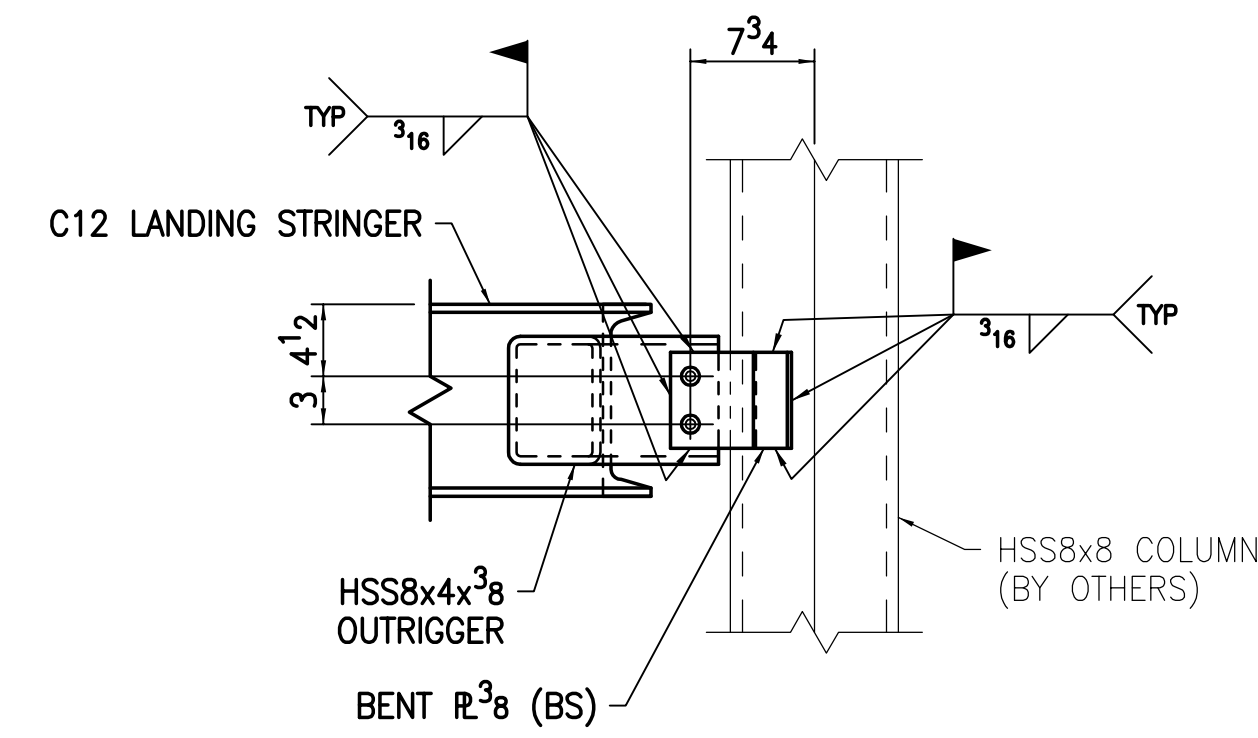
SECT. 9



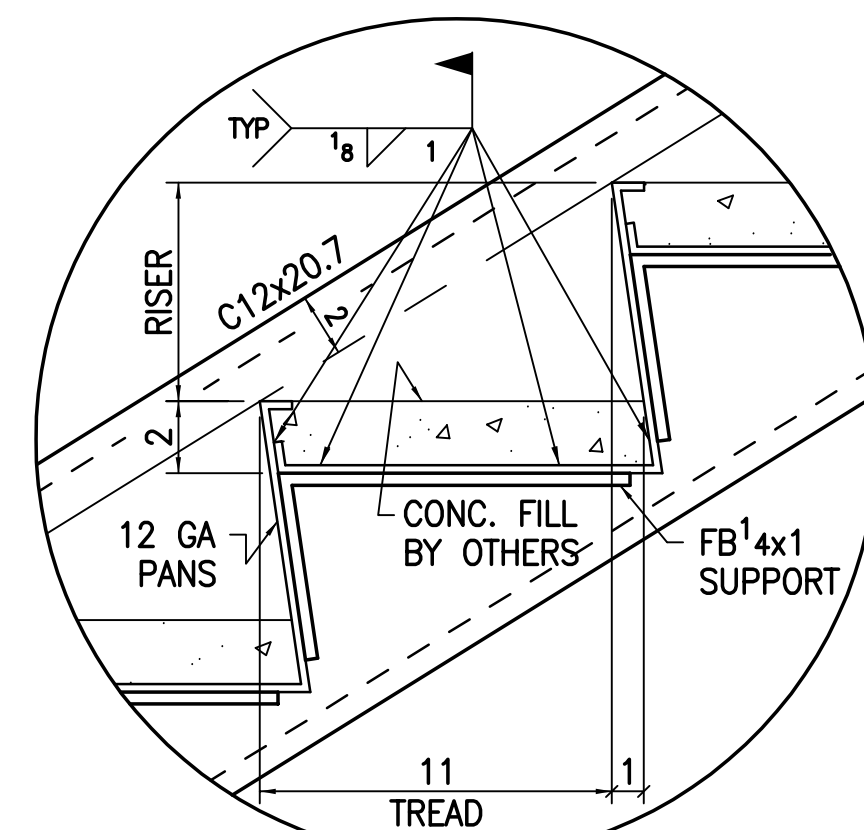
SECT. 10



DETAIL 11

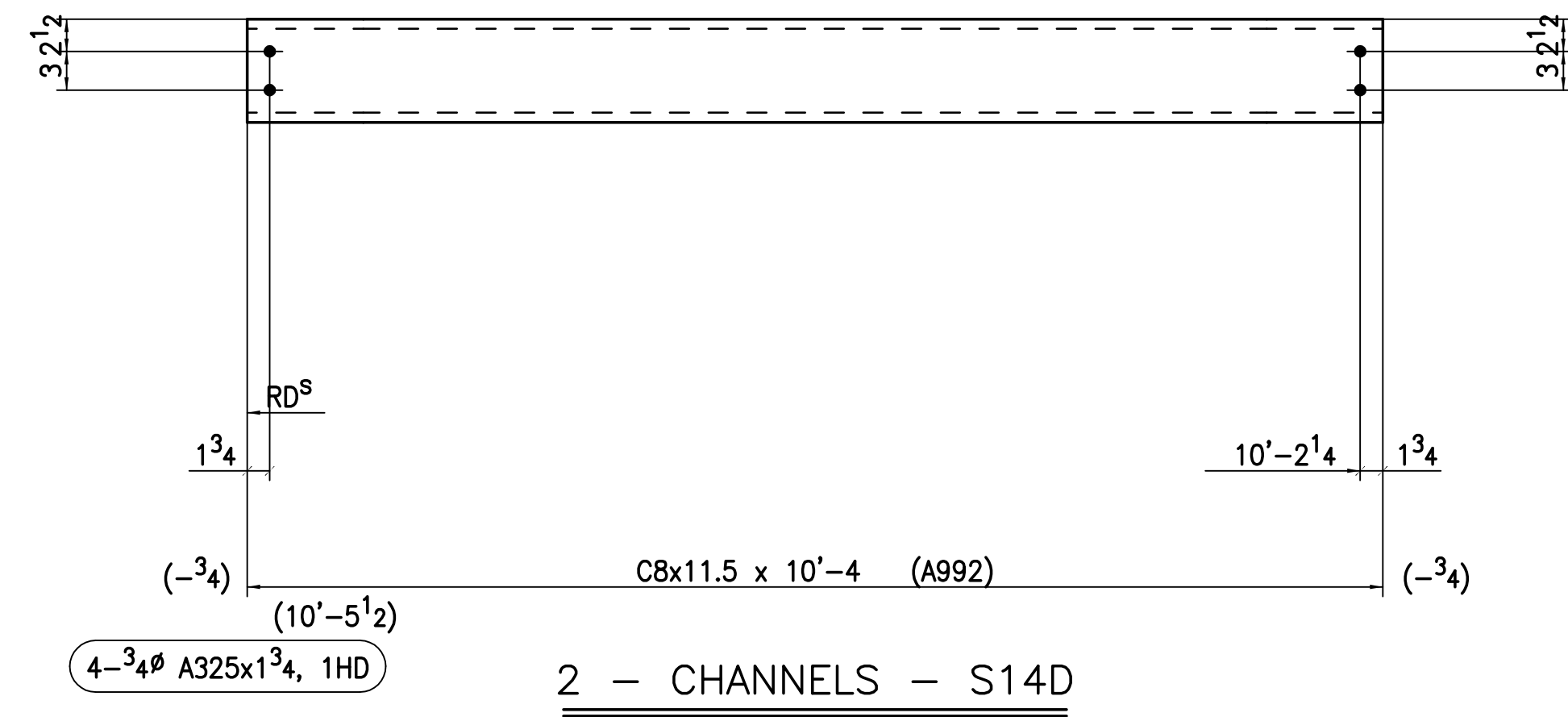
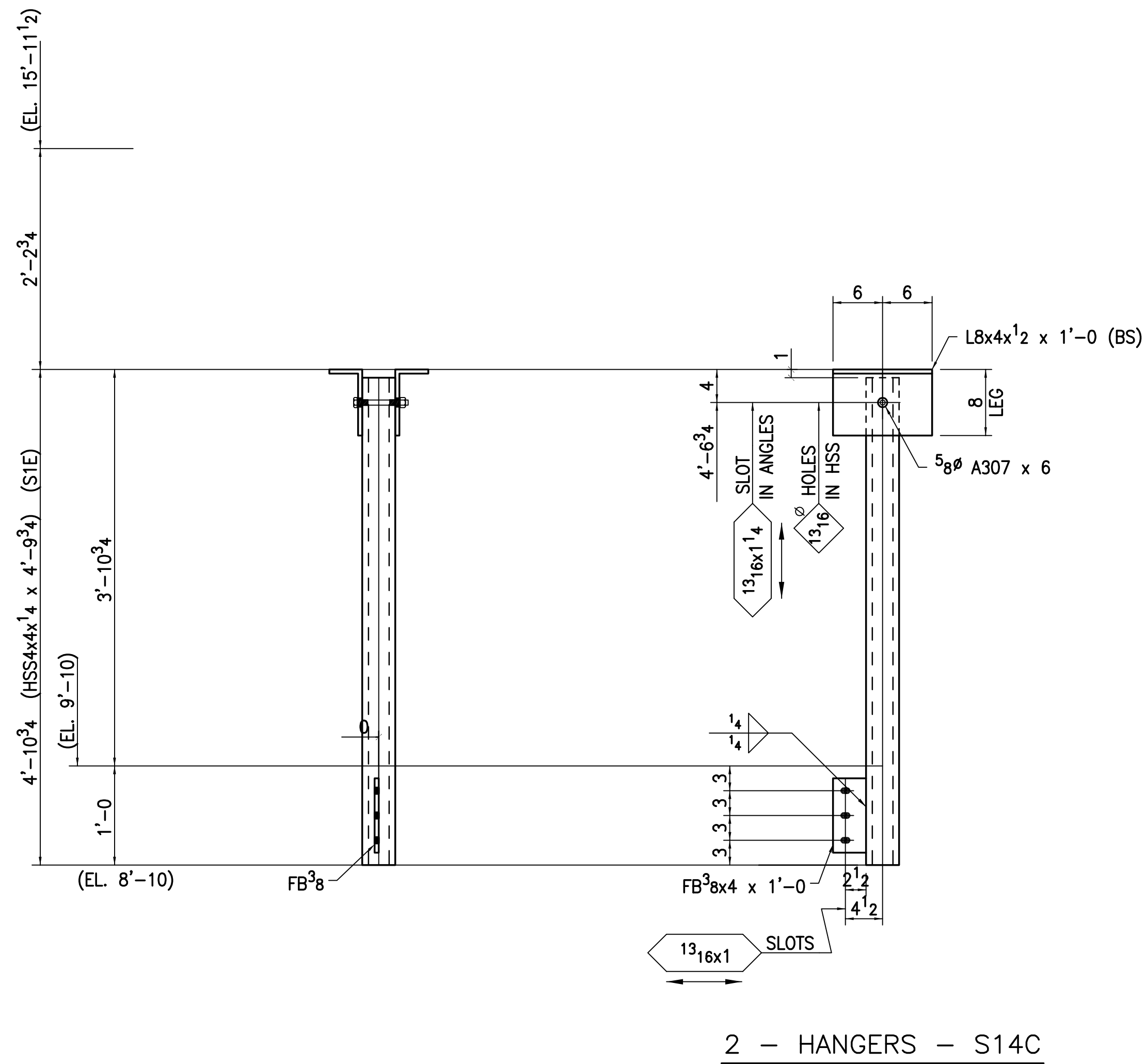
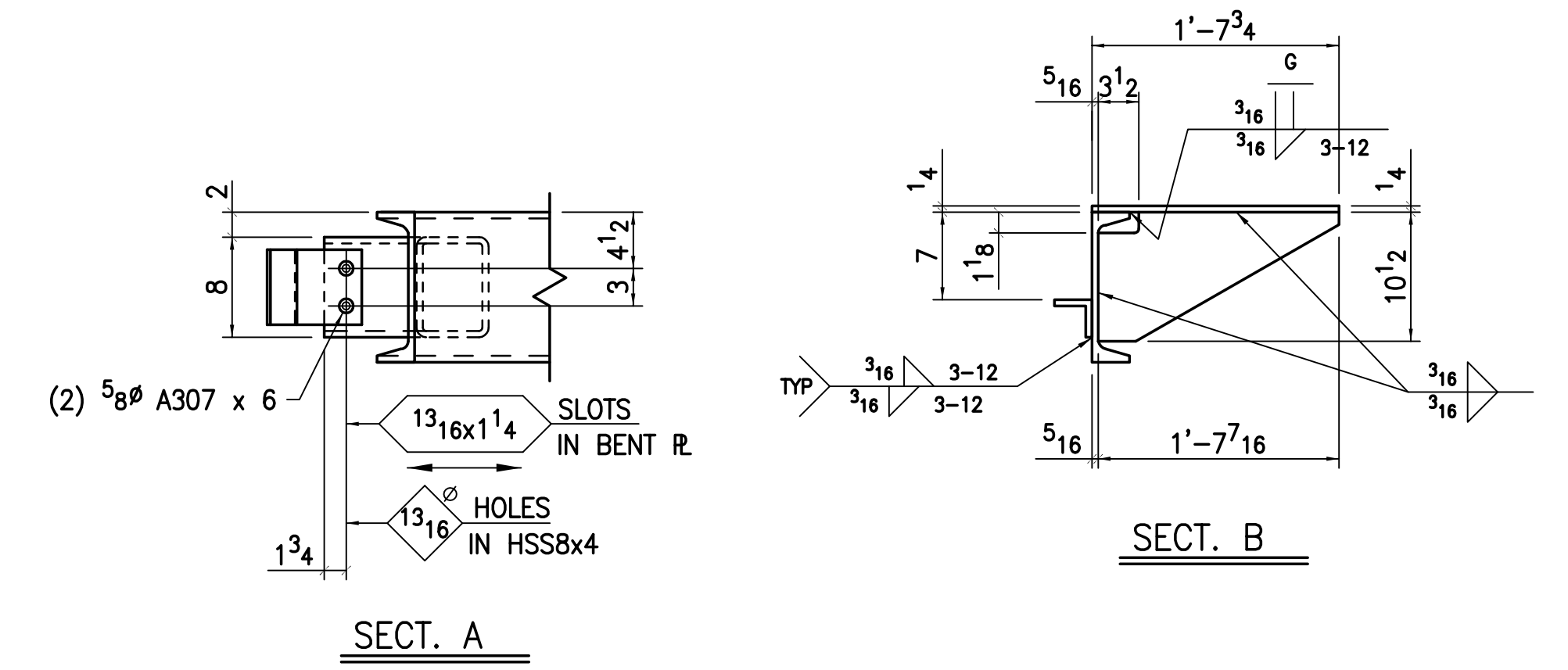
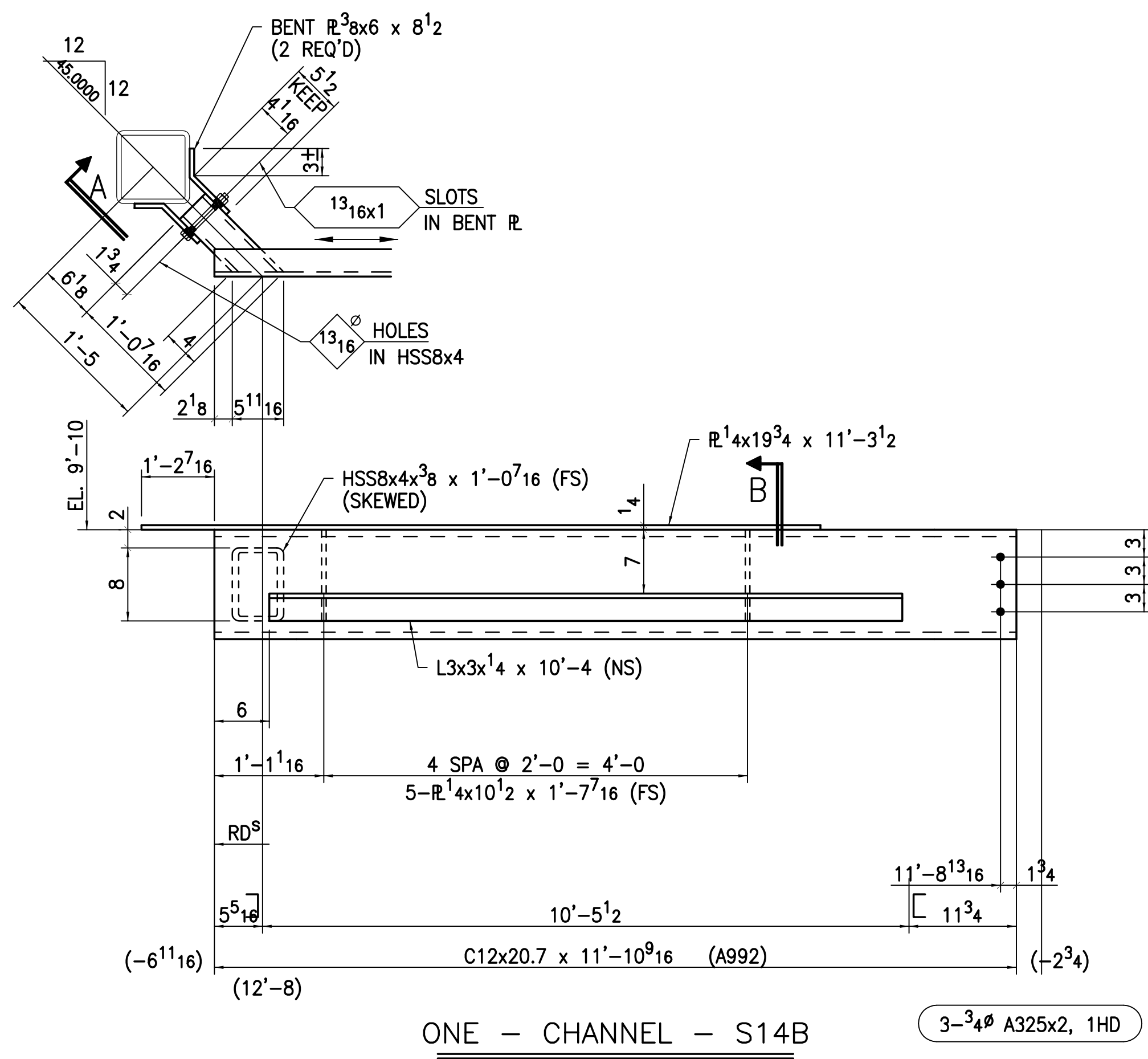
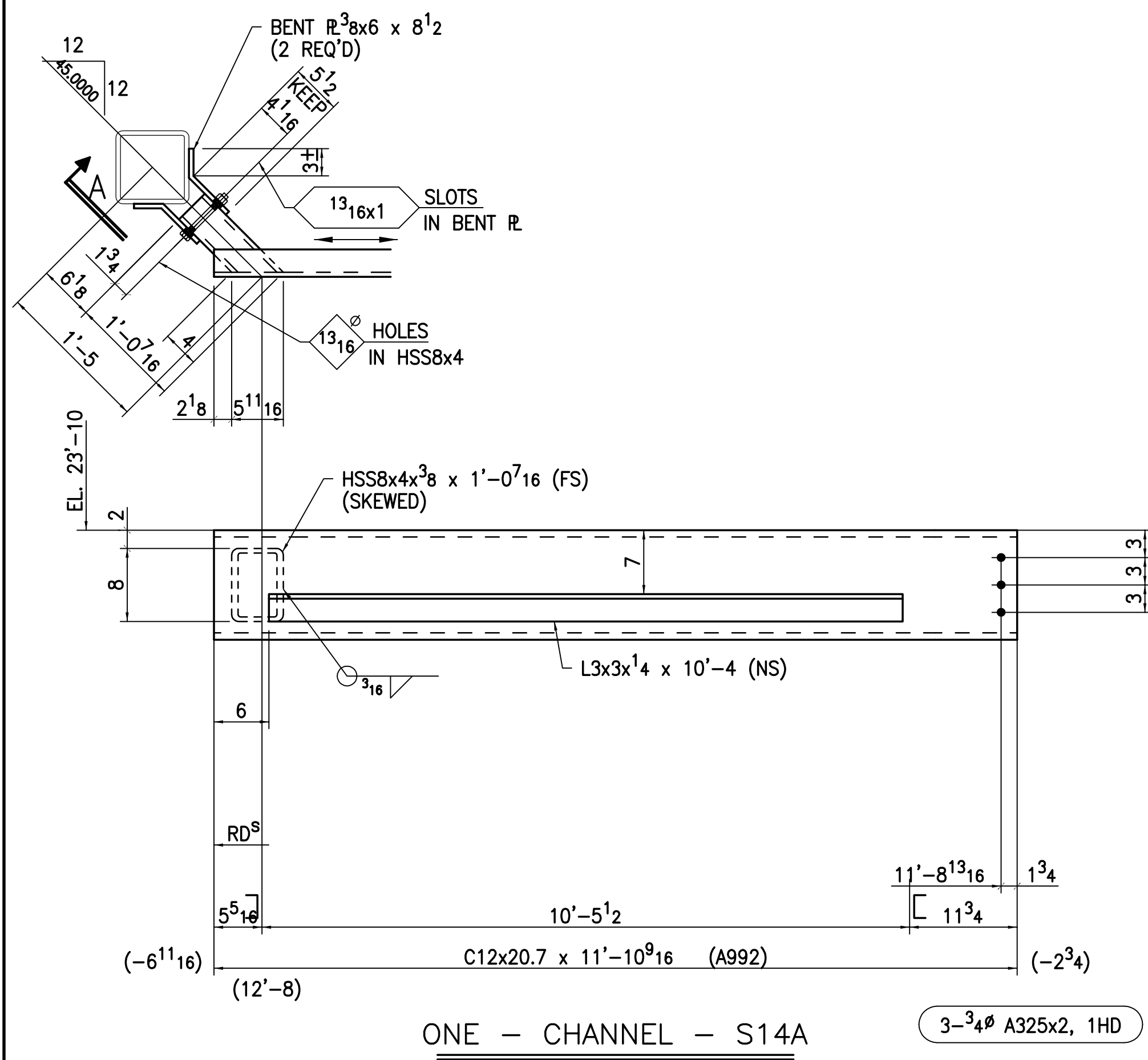


SECT. 12



TYP TREAD & RISER DETAIL

SPEC: W - A992 TS, HSS - A500B PIPE - A53B L, R, FB, C, MC - A36			
WELDING: E70LH			
HOLES: 13/16 TYP (UNO)			
PREP: SSPC-SP2			
FINISH: 1-S/C SHERWIN WILLIAMS KEM BOND HS (GRAY) B50AZ8 UNIVERSAL METAL PRIMER 2.0 MIL DFT			
DATE: 3.24.14	ISSUE: FOR APP'L	DRAWN: JST	JOB NO.
1			DRAWING NO. S13
2			
3			
4			



SPEC: W - A992
 TS, HSS - A500B
 PIPE - A53B
 L, R, FB, C, MC - A36
 WELDING: E70LH
 HOLES: $1^{3/16} \phi$ TYP (UNO)
 PREP: SSPC-SP2
 FINISH: 1-S/C SHERWIN WILLIAMS
 KEM BOND HS (GRAY) B50AZ8
 UNIVERSAL METAL PRIMER
 2.0 MIL DFT

DATE:	ISSUE:	DRAWN:	JOB NO.
3.24.14	FOR APP'L	JST	
1			
2			
3			
4			

S14